

COUNTY OF LOS ANGELES
ROAD DEPARTMENT

PRECISE
BENCH MARK LIST



LANCASTER QUAD

1968 ADJUSTMENT

NGVD29 DATUM

PREFACE

The Road Department level net is composed of more than 1,000 miles of levels supporting in excess of 10,000 bench marks. In 1964-65, a major readjustment of the net was undertaken. To emphasize the complete break with previous elevations, the SY, SG & SL series bench marks have been re-labeled BY, BG & BL, respectively.

To facilitate the adjustment, indexing, and distribution of adjusted values of the net, the County territory was divided into 31 quads or areas. For identification purposes each quad was given a name, viz., "Rosemead," "La Mirada," "Santa Fe," etc. When bench marks and elevations in the Road Department net are used, the name of the quad in which the bench mark is located and the date of the adjustment of the elevation must be included in the bench mark description, e.g.,

BG 1887 ---L+BN IN CONC HDWL OF DRAIN PIPE UNDER DR 218 FT
NE +18 FT SE C/L INT GRAND AVE +CAMERON AVE MKD (BM)
(COVINA ---1965) ELEV. 696.238

It is expected that this general adjustment will, for the most part, remain sound for the next 8 to 12 years. As new circuits are completed, however, re-adjustment of individual quads may become advisable. It is expected that these subsequent adjustments will be in the nature of a few hundredths of a foot. When a quad is re-adjusted, new elevation lists will be published and the date of the re-adjustment will replace the "1965" at the end of the bench mark description. Two bench marks in the same quad with different adjustment dates will not normally join each other. Since all adjustments taper out to nothing at the periphery of the quad, any bench mark in one quad will join any bench mark in another quad regardless of their respective adjustment dates.

The basic accuracy of the net is reflected by an indicated field probable error of plus or minus 0.012 foot per mile of leveling as determined from 298 conditions of closure. However, many years experience in vertical control in the greater Los Angeles basin and Antelope Valley indicate that because of varying degrees of subsidence and heaving, the true datum is recovered only by obtaining substantial agreement of a number of bench marks.

The users of this net are invited to assist in its maintenance by notifying this Department of cases of obliteration, apparent mistakes in descriptions or elevations, and proven disturbance of bench marks.

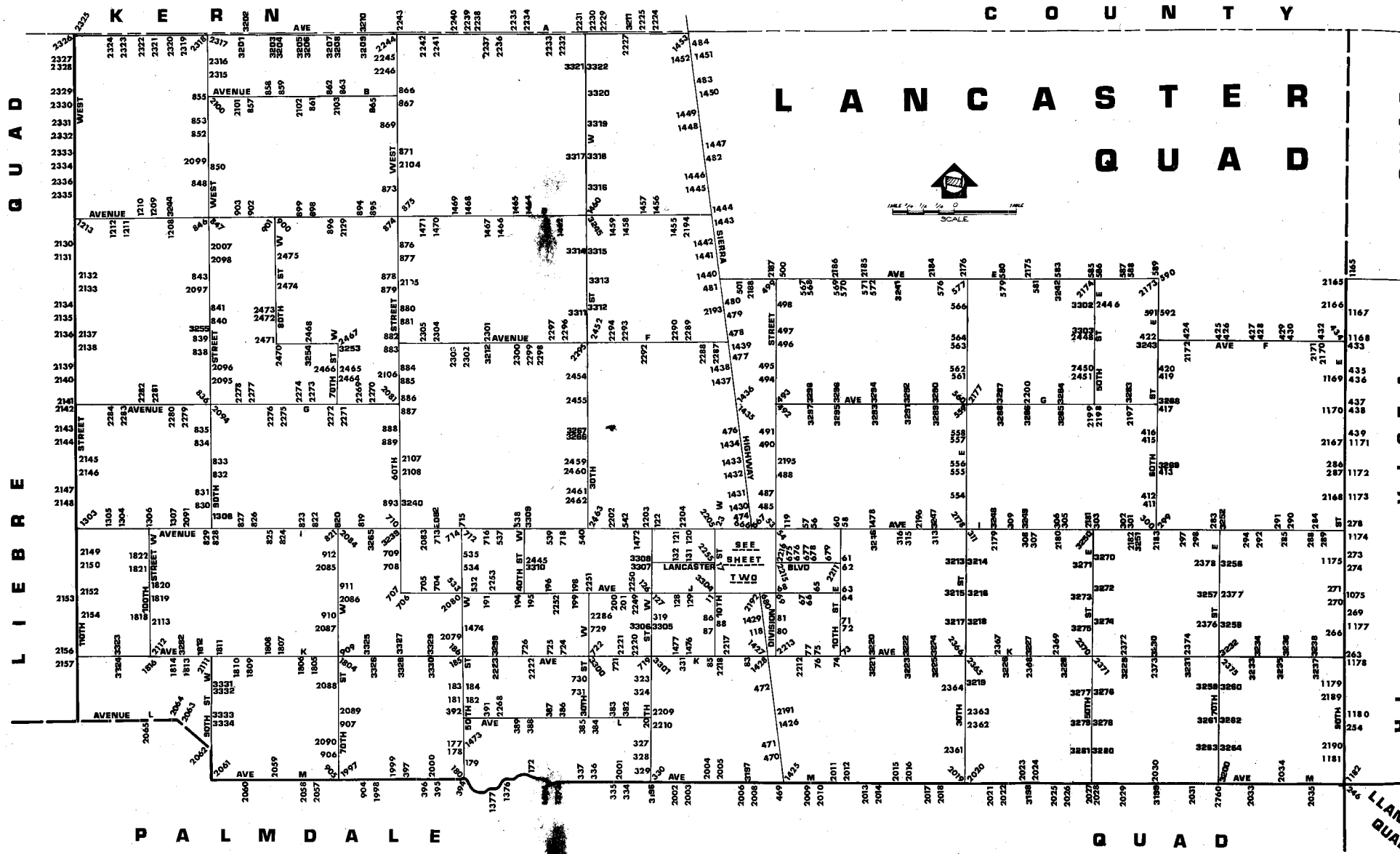
DATUM: U. S. Coast and Geodetic Survey Sea Level Datum
of 1929, through the medium of the Los Angeles
County Engineer Precise Level Net, 1963 Adjust-
ment.

ABBREVIATIONS USED IN BENCH MARK LISTINGS

ABUT - - - - -	Abutment	EC - - - - -	End of Curve
ALG - - - - -	Along	ENT - - - - -	Entrance
ANG PT - - - - -	Angle Point	FL - - - - -	Floor
B/W - - - - -	Back of Walk	FTG - - - - -	Footing
BCR - - - - -	Beginning of Curb Return	F/W - - - - -	Front of Walk
BC - - - - -	Beginning of Curve	GAR - - - - -	Garage
BLDG - - - - -	Building	HDWL - - - - -	Headwall
EM - - - - -	Bench Mark	HSE - - - - -	House
BT SPK - - - - -	Boat or Bolt Spike	INT - - - - -	Intersection
BR CAP - - - - -	Brass or Bronze Cap	IP - - - - -	Iron Pipe
C B - - - - -	Catch Basin	LT - - - - -	Left
CTR - - - - -	Center	LACE - - - - -	L. A. City Engineer
C/L - - - - -	Center Line	LACS - - - - -	L. A. County Engineer
C/L INT - - - - -	Center Line Intersection	LAFC - - - - -	L. A. Co. Flood Control
C/L PROD - - - - -	Center Line Produced	L+BN - - - - -	Lead and Bench Nail
CONC - - - - -	Concrete	L+BR - - - - -	Lead and Brad
COR - - - - -	Corner	L+N - - - - -	Lead and Nail
COE - - - - -	Corps of Engineers	L+RDEM TAG - - - - -	Lead and Road Dept. Bench Mark Tag
CULV - - - - -	Culvert	L+SPK - - - - -	Lead and Spike
CB - - - - -	Curb	L+T - - - - -	Lead and Tack
CS MON - - - - -	County Engineer Monument	MCR - - - - -	Middle of Curb Return
CS BR CAP - - - - -	County Engineer Brass Cap	MKD - - - - -	Marked
CT SPK - - - - -	Cut Spike	MC - - - - -	Middle of Curve
DR - - - - -	Drive or Driveway	MON - - - - -	Monument
E/O - - - - -	East of	N/O - - - - -	North of
ECR - - - - -	End of Curb Return	NR - - - - -	Near

ABBREVIATIONS USED IN BENCH MARK LISTINGS . . . CONTINUED

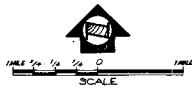
OPP - - - - - Opposite
PI - - - - - Point of Intersection
PK+W - - - - - PK Nail and Washer
P/L - - - - - Property Line
POST - - - - - Point on Semi-Tangent
PP - - - - - Power Pole
PVMT - - - - - Pavement
PROD - - - - - Produced
RD - - - - - Road
RDEM - - - - - Road Dept. Bench Mark
RR - - - - - Railroad
RT - - - - - Right
R/W - - - - - Right of Way
SDMH - - - - - Storm Drain Manhole
SMH - - - - - Sewer Manhole
SPK - - - - - Spike
ST+W - - - - - Spike Tin and Washer
S/O - - - - - South of
TP - - - - - Telephone Pole
USC+GS - - - - - U. S. Coast and Geodetic Survey
USGS - - - - - U. S. Geological Survey
WK - - - - - Walk
W/O - - - - - West of



LIBRE GUAD

K E R N C O U N T Y

L A N C A S T E R
Q U A D



P A L M D A L E

Q U A D

LLAN
QUAL

QUAD-YEAR	ELEV	DESCRIPTION (INCLUDE QUAD AND YEAR IN DESCRIPTION)	BL	BM NUMBER
LANCASTR (1968)	2360.077	L+T MCR @ SE COR BEECH AVE + NEWGROVE ST 22FT E + 23FT S C/L INT	BL	2
LANCASTR (1968)	2361.694	L+T E CB CEDAR AVE 20FT E C/L + 35FT S C/L NEWGROVE ST	BL	3
LANCASTR (1968)	2365.277	L+BN MCR NW COR CEDAR AVE + OLDFIELD ST 24FT N + 24FT W C/L INT	BL	4
LANCASTR (1968)	2368.837	L+T MCR NW COR CEDAR AVE + PILLSBURY ST 23FT N + 22FT W C/L INT	BL	5
LANCASTR (1968)	2369.094	L+BN W CB 1FT N BCR @ NW COR ELM AVE + AVE J 18FT W + 66FT N C/L INT	BL	7
LANCASTR (1968)	2367.369	WLY L+T S CB AVE J 60FT S C/L ON C/L PROD FERN AVE IN FRONT OF PARK VIEW SCHOOL	BL	9
LANCASTR (1968)	2360.515	L+BN MCR SW COR AVE J + TENTH ST W 57FT S + 50FT W C/L INT	BL	11
LANCASTR (1968)	2354.293	L+T CONC WLK HSE NO 44540 TENTH ST W 5FT FROM FIRST STEP TO FRONT DOOR 52FT E + 81FT N C/L INT 10TH ST W + NORBERRY AVE	BL	14
LANCASTR (1968)	2346.121	L+T IN CONC SLAB 69FT E + 104FT N C/L INT LANCASTER BLVD + TENTH ST W	BL	17
LANCASTR (1968)	2338.501	L+BN W CB 10TH ST W 28FT W C/L 3FT N OF S P/L BLDG 44913 + 570FT S JACKMAN ST 3FT N PP 271449E	BL	18
LANCASTR (1968)	2337.758	L+BN E CB 10TH ST W 28FT E C/L + 86FT N OF N EDGE DRWY BLDG 44902 480FT S JACKMAN ST	BL	19
LANCASTR (1968)	2336.042	L+T IN CB RET 10FT N BCR @ SW COR 10TH ST W + JACKMAN ST 33FT S + 30FT W C/L INT	BL	20
LANCASTR (1968)	2330.294	L+T MCR @ NW COR AVE I + 10TH ST W 50FT N + 39FT W C/L INT	BL	23
LANCASTR (1968)	2332.322	L+T N CB AVE I 40FT N C/L ON C/L PROD FERN AVE	BL	24
LANCASTR (1968)	2335.330	L+T N CB AVE I 40FT N C/L ON C/L PROD ALLEY W OF DATE AVE	BL	25
LANCASTR (1968)	2334.686	L+BN W EDGE CONC DRWY HSE NO 673 31FT W + 75FT N C/L INT ELM AVE + AVE I	BL	26
LANCASTR (1968)	2335.900	L+T N CB AVE I 40FT N C/L ON C/L PROD CEDAR AVE	BL	27
LANCASTR (1968)	2336.676	L+BN E CB CEDAR AVE 6FT S BCR @ SE COR CEDAR AVE + AVE I 41FT S + 18FT E C/L INT	BL	28
LANCASTR (1968)	2341.523	L+T W CB CEDAR AVE 3FT S BCR @ SW COR CEDAR AVE + JACKMAN ST 36FT S + 18FT W C/L INT	BL	29
LANCASTR (1968)	2340.025	L+T W CB DATE AVE 0.5FT N BCR @ NW COR DATE AVE + JACKMAN ST 33FT N + 18FT W C/L INT	BL	30
LANCASTR (1968)	2340.646	L+BN S CB JACKMAN ST 20FT S C/L + 25FT W C/L ALLEY TO S BETWEEN FIG AVE + ELM AVE 5FT W BCR	BL	31
LANCASTR (1968)	2340.078	L+BN S CB JACKMAN ST 6FT W BCR @ SW COR FIG AVE + JACKMAN ST 20FT S + 52FT W C/L INT	BL	32
LANCASTR (1968)	2350.697	L+T CONC STEP HSE NO 45027 N DIVISION ST 295FT N + 54FT W C/L INT KETTERING ST + DIVISION ST	BL	34

QUAD-YEAR	ELEV	DESCRIPTION (INCLUDE QUAD AND YEAR IN DESCRIPTION)	BM	NUMBER
LANCASTR (1968)	2348.071	L+BN W CB YUCCA AVE 6FT N BCR @ NW COR YUCCA AVE + KETTERING ST 60FT N + 34FT W C/L INT	BL	38
LANCASTR (1968)	2349.063	L+T CONC BASE FENCE POST 30FT N OF C/L KETTERING ST + 209FT W C/L YUCCA AVE 27FT W OF W EDGE CONC DRWY	BL	39
LANCASTR (1968)	2346.736	L+BRAD E CB SIERRA HWY 30FT E C/L + 25FT N C/L KETTERING ST	BL	40
LANCASTR (1968)	2347.079	L+T IN SW CB RET 26FT S C/L KETTERING ST + 30FT W C/L SIERRA HWY	BL	41
LANCASTR (1968)	2372.763	L+T IN CONC APRON IN NE COR GROCERY STORE @ SW COR NUGENT ST + DIVISION ST 23FT S + 33FT W C/L INT	BL	44
LANCASTR (1968)	2364.565	CS BR CAP MON @ C/L INT OF DIVISION ST + NEWGROVE ST (E EDGE)	BL	47
LANCASTR (1968)	2360.182	CS MON (E EDGE) IN WELL @ C/L INT NEWGROVE ST TO E + TREVOR AVE	BL	49
LANCASTR (1968)	2362.614	L+BN E CB SIERRA HWY 25FT E C/L + 115FT S C/L PROD NEWGROVE ST 16FT S OF END CB	BL	51
LANCASTR (1968)	2361.869	L+T @ MCR SW COR NEWGROVE ST + SIERRA HWY 23FT S + 37FT W C/L INT	BL	52
LANCASTR (1968)	2344.596	L+T @ MCR NW COR AVE I + DIVISION ST 42FT N + 43FT W C/L INT	BL	53
LANCASTR (1968)	2344.702	L+T @ MCR SW COR AVE I + DIVISION ST 42FT S + 44FT W C/L INT	BL	54
LANCASTR (1968)	2354.076	CSBM MON IN CONC FLUSH 1FT N OF N CB + 19FT W BCR @ NW COR 5TH ST E + AVE I 41FT N + 82FT W C/L INT MKD (BM 105-20 1958)	BL	56
LANCASTR (1968)	2353.916	L+T N CB 3FT W BCR 40FT N + 62FT W C/L INT AVE I + 5TH ST E	BL	57
LANCASTR (1968)	2360.924	USC+GS BR CAP IN CONC POST 8IN UP 48FT N + 56FT E C/L INT AVE I + 10TH ST E MKD (Z1155, 1961)	BL	58
LANCASTR (1968)	2360.924	USC+GS BR CAP 78FT W + 40FT S C/L INT AVE I + 10TH ST E MKD (Y 488 RESET 1961)	BL	60
LANCASTR (1968)	2377.836	CS MON IN WELL 20IN DN @ C/L INT LANCASTER BLVD + 10TH ST E MKD (1/4 COR 14 13 T7N R12W)	BL	61
LANCASTR (1968)	2381.178	L+T W EDGE OF CONC DR OF GARAGE TO HSE NO 1016 LANCASTER BLVD 45FT S C/L + 145FT E C/L 10TH ST E	BL	62
LANCASTR (1968)	2397.630	L+T NR MCR @ SW COR 10TH ST E + AVE J 48FT W + 45FT S C/L INT	BL	63
LANCASTR (1968)	2396.604	CS MON IN WELL 18IN DN @ C/L INT AVE J + 10TH ST E MKD (SEC COR 14 13 23 24 T7N R12W)(W EDGE)	BL	64
LANCASTR (1968)	2391.488	CS MON IN WELL @ C/L INT AVE J + 5TH ST E MKD (T7N R12W 1/4 COR 14 23)(E EDGE)	BL	65
LANCASTR (1968)	2384.891	L+BN @ MCR SE COR 4TH ST E + AVE J (SERVICE RD) 80FT S + 24FT E C/L INT	BL	66
LANCASTR (1968)	2384.032	L+BN @ MCR SE COR KIRKLAND AVE + AVE J 75FT S + 27FT E C/L INT	BL	67

QUAD-YEAR	ELEV	DESCRIPTION (INCLUDE QUAD AND YEAR IN DESCRIPTION)	BM NUMBER
LANCASTR (1968)	2382.246	L+BN 1FT W BCR @ SE COR AVE J + DIVISION ST 71FT E + 30FT S C/L INT	BL 68
LANCASTR (1968)	2380.650	CS MON (N EDGE) IN WELL @ C/L INT AVE J + DIVISION ST MKD (15 14 22 23 T7N R12W)	BL 69
LANCASTR (1968)	2413.437	L+T E SIDE 36IN STANDPIPE 215FT W C/L 10TH ST E + 5FT N C/L AVE J-8 263FT NW PP 917614E	BL 71
LANCASTR (1968)	2414.076	CS MON IN WELL 8IN DN @ C/L INT 10TH ST E + AVE J-8 0.5 MI S AVE J MKD (T7N, R12W 1/4 COR, 23-24)(W EDGE)	BL 72
LANCASTR (1968)	2434.619	CS MON IN WELL 15IN DN @ C/L INT 10TH ST E + AVE K MKD (SEC COR 23 24 25 26 T7N R12W)(N EDGE)	BL 73
LANCASTR (1968)	2436.070	CHIS X IN TOP OF BOLT ON S SIDE OF FIRE HYDRANT BASE 50FT W C/L 10TH ST E + 28FT S C/L AVE K	BL 74
LANCASTR (1968)	2425.950	CS MON IN WELL @ C/L INT AVE K + 6TH ST E (W EDGE)	BL 75
LANCASTR (1968)	2426.571	CS MON IN CONC POST 3IN UP 40FT S + 55FT W C/L INT AVE K + 6TH ST E MKD (BM 105-9 1958)	BL 76
LANCASTR (1968)	2425.504	CHIS X IN TOP OF BOLT ON W SIDE OF FIRE HYDRANT BASE 24FT S + 40FT W C/L INT AVE K + 5TH ST E 135FT W DRWY TO HSE 504	BL 77
LANCASTR (1968)	2400.652	L+BN @ MCR @ NE COR DIVISION ST + AVE J-8 28FT N + 41FT E C/L INT	BL 80
LANCASTR (1968)	2399.479	L+BN @ MCR SE COR DIVISION ST + AVE J-7 36FT S + 35FT E C/L INT	BL 81
LANCASTR (1968)	2414.056	CS MON IN WELL 18IN DN @ C/L INT AVE K + 5TH ST W MKD (22 27 T7N R12W)(N SIDE)	BL 83
LANCASTR (1968)	2405.356	L+BN @ NE COR OF SO CAL GAS CO VALVE BOX 44FT N C/L AVE K + 115FT W C/L 10TH ST W	BL 85
LANCASTR (1968)	2380.779	CS MON IN WELL @ C/L INT 10TH ST W + AVE J-8 MKD (1/4 COR 21 22 T7N R12W)(W EDGE)	BL 86
LANCASTR (1968)	2381.034	L+T 1FT N BCR @ NE COR 10TH ST W + AVE J-8 51FT N + 30FT E C/L INT	BL 87
LANCASTR (1968)	2377.269	L+T S CB AVE J-6 1FT E BCR @ SE COR 10TH ST W + AVE J-6 18FT S + 65FT E C/L INT	BL 88
LANCASTR (1968)	2363.320	CS MON IN WELL 8IN DN @ C/L INT OLDFIELD ST + DATE AVE	BL 91
LANCASTR (1968)	2363.601	L+T @ MCR NW COR OLDFIELD ST + DATE AVE 21FT N + 24FT W C/L INT	BL 92
LANCASTR (1968)	2397.521	USC+GS DISK IN CONC 6IN DN 60FT E + 125FT S C/L INT SIERRA HWY + AVE J-8 MKD (S 811 1947 RESET 1955)	BL 118
LANCASTR (1968)	2346.709	USC+GS BRASS DISK IN CONC 4IN UP 65FT E DR TO ANTELOPE VALLEY FAIR 681FT E OF C/L DIVISION ST + 41FT N C/L AVE I MKD (X 488 1955)	BL 119
LANCASTR (1968)	2325.296	L+T IN N SERVICE ROAD CB @ NE COR AVE I + 15TH ST W 51FT E + 80FT N C/L INT	BL 120
LANCASTR (1968)	2325.486	RDBM TAG IN S SERVICE ROAD CB @ SW COR AVE I + 15TH ST W 51FT W + 80FT S C/L INT	BL 121

QUAD-YEAR	ELEV	DESCRIPTION (INCLUDE QUAD AND YEAR IN DESCRIPTION)	BM NUMBER
LANCASTR (1968)	2322.662	CS MON 5IN UP @ NE COR AVE I + 20TH ST W 40FT N + 66FT E C/L INT MKD (BM 102-3 1957)	BL 122
LANCASTR (1968)	2342.454	CS MON IN WELL 12IN DN @ C/L INT AVE J + 20TH ST W MKD (SEC COR 17 16 20 21 R12W T7N) (N EDGE)	BL 126
LANCASTR (1968)	2344.319	RDBM TAG IN N CB @ NE COR AVE J + 20TH ST W 108FT E + 30FT N C/L INT	BL 127
LANCASTR (1968)	2349.940	RDBM TAG 6FT W BCR @ SW COR AVE J + 15TH ST W 66FT W + 30FT S C/L INT	BL 128
LANCASTR (1968)	2350.669	RDBM TAG 40FT S BCR @ SE COR AVE J + 15TH ST W 100FT S + 30FT E C/L INT	BL 129
LANCASTR (1968)	2339.211	L+BN 3FT W OF BCR @ SW COR LANCASTER BLVD + LOWTREE AVE 53FT W + 30FT S C/L INT	BL 131
LANCASTR (1968)	2336.754	L+BN 4FT N BCR @ NE COR LANCASTER BLVD + 15TH ST W 69FT N + 30FT E C/L INT	BL 132
BASELINE (1965)	2494.079	USC+GS DISK IN CONC POST 92FT N + 65FT W C/L INT AVE M + 40TH ST W MKD (F 489 1955)	BL 172
LANCASTR (1968)	2461.848	L+T NE COR CONC SLAB 100FT W + 66FT S C/L INT 50TH ST W + AVE L-8	BL 177
LANCASTR (1968)	2477.887	L+T CONC WLK IN FR OF CHURCH 45FT N + 65FT W C/L INT 50TH ST W + AVE L-12	BL 178
LANCASTR (1968)	2485.342	L+T CONC PORCH 50FT W + 45FT N C/L INT 50TH ST W + AVE L-14	BL 179
BASELINE (1965)	2495.234	L+T CONC SLAB NW COR PORCH TO HSE NO 42002 50TH ST W 48FT N + 66FT E C/L INT 50TH ST W + AVE M	BL 180A
LANCASTR (1968)	2428.574	L+T NE COR CONC IN HSE NO 42921 50TH ST W 71FT W + 390FT S C/L INT 50TH ST W + AVE K-12	BL 181
LANCASTR (1968)	2425.255	L+T N CONC DR HSE NO 42958 50TH ST W 44FT E + 60FT S C/L INT 50TH ST W + AVE K-12	BL 182
LANCASTR (1968)	2411.802	2IN IRON PIPE 6IN UP 40FT W OF C/L 50TH ST W ON C/L AVE K-8	BL 183
LANCASTR (1968)	2410.132	CS MON (E EDGE) IN WELL 18IN DN @ C/L INT 50TH ST W + AVE K-8 MKD (1/4 COR 25 26 T7N R13W)	BL 184
LANCASTR (1968)	2380.075	CS MON (W EDGE) IN WELL 12IN DN @ C/L INT 50TH ST W + AVE K MKD (SEC COR 23 24 25 26 T7N R13W)	BL 185
LANCASTR (1968)	2382.321	L+T NW COR CONC PORCH HSE NO 4849 AVE K 115FT E + 120FT N C/L INT AVE K + 50TH ST W	BL 186
LANCASTR (1968)	2350.430	RDBM TAG S SIDE WIER BOX 97FT E + 85FT N C/L INT AVE J + 45TH ST W (TO THE N)	BL 191
LANCASTR (1968)	2343.854	ENG TAG + BRAD IN 2IN IP RP TO C/L INT 3IN UP @ SW COR AVE J + 40TH ST W 50FT S + 50FT W C/L INT	BL 194
LANCASTR (1968)	2343.908	CS MON IN WELL 8IN DN @ C/L INT AVE J + 40TH ST W MKD (T7N, R12W 13-18-19-24) USE N EDGE	BL 195
LANCASTR (1968)	2341.517	L+T CONC SLAB IN FRONT OF CHURCH @ NE COR AVE J + 35TH ST W 130FT N + 170FT E C/L INT MKD (BM)	BL 196
LANCASTR (1968)	2342.002	L+T IN SE COR CONC PORCH TO HSE NO 3129 W AVE J 75FT N C/L + 895FT W 30TH ST W	BL 198

QUAD-YEAR	ELEV	DESCRIPTION (INCLUDE QUAD AND YEAR IN DESCRIPTION)	BM NUMBER
LANCASTR (1968)	2341.823	PM IN DIAMOND ON NW QUAD SMH RIM ON C/L AVE J + 500FT W 30TH ST W 385FT E HSE 3129 + 90FT E PP 800770E	BL 199
LANCASTR (1968)	2338.585	CS MON (N EDGE) IN WELL 18IN DN @ C/L INT AVE J + 25TH ST W MKD (1/4 COR 17 20 T7N R12W)	BL 200
LANCASTR (1968)	2340.000	PM IN DIAMOND ON SMH RIM IN THE SW QUAD 15FT N C/L AVE J + 6FT W C/L 25TH ST W	BL 201
BASELINE (1965)	2526.911	CS MON IN WELL @ C/L INT AVE M + 90TH ST E MKD (SEC COR 31 32 5 6 T7N R10W)	BL 246A
BASELINE (1965)	2496.469	CS MON IN WELL @ C/L INT AVE L + 90TH ST E MKD (T7N R10W, SEC COR 29,30,31,32)	BL 254A
BASELINE (1965)	2473.471	CS MON 30IN DN @ C/L INT AVE K + 90TH ST E MKD (T7N R10W SEC 19 20 29 30)	BL 263A
BASELINE (1965)	2454.755	CS MON 30IN DN @ C/L INT AVE J-8 + 90TH ST E MKD (R10W T7N 1/4 SEC 19 20)	BL 266A
BASELINE (1965)	2450.188	L+T N END 1ST STEP OF PORCH OF HSE NO 44233 90TH ST E 100FT W C/L + 1000FT S AVE J	BL 269A
BASELINE (1965)	2444.163	L+T NR SE EDGE CONC BASE NR CTR OF GAS PUMP ISL 60FT W C/L 90TH ST E + 60FT N C/L AVE J	BL 270A
BASELINE (1965)	2442.427	CS MON 15IN DN @ C/L INT 90TH ST E + AVE J MKD (T7N R10W SEC COR 18 17 19 20)	BL 271A
BASELINE (1965)	2432.291	L+T NR E EDGE CONC PORCH HSE NO 44709 90TH ST E 79FT W C/L + 2200FT N AVE J 6FT N OF S EDGE PORCH	BL 273A
BASELINE (1965)	2426.043	CS MON 20IN DN @ C/L INT 90TH ST E + AVE I-8 MKD (1/4 SEC 17 18 T7N R10W)	BL 274A
BASELINE (1965)	2413.455	CS MON 12IN DN @ C/L INT 90TH ST E + AVE I MKD (R10W T7N COR SEC 7,8,17,18)	BL 278A
LANCASTR (1968)	2401.198	CS MON IN CONC SQ 2IN UP 3FT S PP NO 991755E 39FT S C/L AVE I + 70FT W C/L 70TH ST E MKD (BM 107-30 1961)	BL 283
LANCASTR (1968)	2412.029	CS MON IN CONC SQ 2IN UP 1FT N TP NO K3143Y 30FT N C/L AVE I + 27FT W C/L PROP 85TH ST E MKD (BM 107-27 1961)	BL 284
LANCASTR (1968)	2414.045	CS MON 2FT S PP NO 991781E 30FT S C/L AVE I + 47FT W C/L 80TH ST E MKD (BM 107-28 1961)	BL 285
BASELINE (1965)	2393.618	CS MON @ C/L INT AVE H + 90TH ST E MKD (R10W T7N COR SEC 5 6 7 8)	BL 286A
BASELINE (1965)	2395.076	RDBM TAG @ CTR OF OLD CONC BASE OF MTR MOUNT 40FT W C/L 90TH ST E + 100FT N C/L AVE H	BL 287A
LANCASTR (1968)	2410.298	CS MON 18IN DN @ C/L INT AVE I + PROP 85TH ST E MKD (R10W T7N SEC 7 18)	BL 288
LANCASTR (1968)	2411.788	RDBM TAG @ SE COR OF CONC SLAB OF WATER TANK TOWER @ HSE 8359 AVE I 60FT N C/L + 20FT W C/L PROP 85TH ST E	BL 289
LANCASTR (1968)	2417.411	RDBM TAG TOP OF CONC SUPPORT OF LGE WATER TANK 90FT N C/L AVE I + 45FT W C/L 80TH ST E	BL 290

QUAD-YEAR	ELEV	DESCRIPTION (INCLUDE QUAD AND YEAR IN DESCRIPTION)	BM NUMBER
LANCASTR (1968)	2415.623	L+T @ SW COR OF CONC WLK TO HSE NO 7848 AVE I 200FT W C/L 80TH ST E + 80FT N C/L AVE I	BL 291
LANCASTR (1968)	2403.936	L+T W SIDE OF RIM OF 12IN STAND PIPE 50FT E OF C/L 75TH ST E + 53FT N C/L AVE I	BL 292
LANCASTR (1968)	2403.942	CSBM MON FLUSH 25FT S C/L AVE I + 25FT W C/L 75TH ST E 15FT W PP 482159E MKD (BM 107-29 1961)	BL 294
LANCASTR (1968)	2399.139	CS MON IN CONC 2IN UP 33FT S C/L AVE I + 142FT W C/L 65TH ST E 3FT S PP NO 1121124 MKD (BM 107- 31 1961)	BL 297
LANCASTR (1968)	2402.226	RDBM TAG TOP OF CONC WEIR BOX 35FT N C/L AVE I 400FT E OF 65TH ST E 50FT E OF DRWY TO HSE NO 6535 AVE I	BL 298
LANCASTR (1968)	2401.085	L+T E CB DRWY HSE NO 6007 AVE I 40FT N + 100FT E C/L INT E AVE I + 60TH ST E	BL 299
LANCASTR (1968)	2400.985	L+T W CB DRWY HSE NO 6007 AVE I 42FT N + 90FT E C/L INT E AVE I + 60TH ST E	BL 300
LANCASTR (1968)	2393.793	L+T W END CONC GARAGE SLAB HSE NO 5347 AVE I 130FT N + 165FT W C/L INT AVE I + 55TH ST E	BL 301
LANCASTR (1968)	2393.715	L+T S END CONC PORCH HSE NO 5335 AVE I 140FT N + 310FT W C/L INT AVE I + 55TH ST E	BL 302
LANCASTR (1968)	2389.470	L+T W END 1ST STEP HSE NO 5018 AVE I 90FT S + 165FT E C/L INT AVE I + 50TH ST E	BL 303
LANCASTR (1968)	2386.139	2IN IP 1FT ABOVE GROUND 40FT S OF C/L INT AVE I + 45TH ST E (USE E EDGE)	BL 305
LANCASTR (1968)	2383.862	L+T NE COR CONC WLK HSE NO 4359 AVE I 100FT N + 80FT W C/L INT AVE I + 45TH ST E	BL 306
LANCASTR (1968)	2384.098	L+T NE COR CONC WLK HSE NO 4010 AVE I 90FT S + 140FT E C/L INT AVE I + 40TH ST E	BL 307
LANCASTR (1968)	2383.463	CS MON FLUSH (W EDGE) 30FT S + 30FT W C/L INT AVE I + 40TH ST E MKD (WC)	BL 308
LANCASTR (1968)	2382.186	L+T SE COR CONC SLAB @ NE COR BLDG NO 3606 AVE I 82FT S C/L + 150FT E C/L 36TH ST E	BL 309
LANCASTR (1968)	2380.173	CS MON IN CONC 2IN UP 29FT S + 67FT W C/L INT AVE I + 30TH ST E 3FT S PP NO 1219368 E MKD (BM 107-38 1961)	BL 311
LANCASTR (1968)	2376.135	CS MON IN WELL @ C/L INT AVE I + 25TH ST E MKD (T7N, R11W, 1/4 COR 7-18) (E EDGE)	BL 313
LANCASTR (1968)	2373.765	USGS MON W/BR CAP 6IN UP 30FT S + 35FT E C/L INT 20TH ST E + AVE I MKD (LS 11 1929)	BL 315
LANCASTR (1968)	2373.019	L+T SE COR OF CONC APRON OF GAS STA 55FT N C/L AVE I + 65FT W C/L 20TH ST E	BL 316
LANCASTR (1968)	2353.579	L+T IN NW COR OF 4FT SQ CONC SLAB AT NW COR HSE NO 44126 20TH ST W 1700FT S OF AVE J 68FT E OF C/L 20TH ST W	BL 319
LANCASTR (1968)	2414.020	CS BR CAP MON 18IN DN @ C/L INT 20TH ST W + AVE K-8 MKD (1/4 COR SEC 29-28 T7N R12W)	BL 323
LANCASTR (1968)	2418.509	L+T IN CONC SLAB ON SE COR TO HSE NO 43141 20TH ST W 100FT W C/L + 260FT S C/L AVE K-8	BL 324

QUAD-YEAR	ELEV	DESCRIPTION (INCLUDE QUAD AND YEAR IN DESCRIPTION)	BM NUMBER
LANCASTR (1968)	2480.577	L+T IN CONC SLAB IN FRONT OF DOOR TO HSE 42423 20TH ST W 100FT W C/L + 250FT N C/L AVE L-8	BL 327
LANCASTR (1968)	2482.065	CS MON IN WELL 18IN DN @ C/L INT 20TH ST W + AVE L-8 MKD (SEC COR 28 29 32 33 T7N R12W)	BL 328
LANCASTR (1968)	2520.848	RDBM TAG IN NE COR 3FT SQ CONC BASE TO GAS PUMP 200FT N C/L AVE M + 125FT W C/L 20TH ST W	BL 329
BASELINE (1965)	2523.175	USC+GS BRASS DISK IN TOP OF CONC POST 4IN UP 208FT E OF C/L 20TH ST W + 33FT N C/L AVE M MKD (D 489 1955)	BL 330
LANCASTR (1968)	2391.589	CS MON IN WELL 18IN DN @ C/L INT 15TH ST W + AVE K MKD (1/4 SEC 21 28 T7N R12W)	BL 331
BASELINE (1965)	2518.149	CS MON IN WELL 18IN DN @ C/L INT AVE M + 25TH ST W MKD (1/4 COR 32 5 T6N R12W)	BL 334
BASELINE (1965)	2523.287	L+T IN SE COR OF CONC DR TO HSE NO 2524 AVE M 140FT S C/L + 215FT W C/L 25TH ST W	BL 335
BASELINE (1965)	2520.165	USC+GS MON TOP OF CONC POST 4IN UP 300FT E C/L 30TH ST W + 34FT N C/L AVE M 6FT W PP NO 1054594E MKD (E 489 1955)	BL 336
BASELINE (1965)	2514.880	CS MON IN WELL @ C/L INT AVE M + 30TH ST W MKD (SEC COR 31 32 5 6 T7N T6N R12W)	BL 337
LANCASTR (1968)	2448.705	CS MON 24IN DN @ C/L INT OF AVE L + 25TH ST W MKD (1/4 SEC COR 29 32 T7N R12W)	BL 382
LANCASTR (1968)	2448.903	L+T IN BOTTOM STEP @ W EDGE OF CONC STEPS TO HSE NO 2507 AVE L 73FT N C/L + 78FT W C/L 25TH ST W	BL 383
LANCASTR (1968)	2441.201	CS MON 18IN DN @ C/L INT OF AVE L + 30TH ST W MKD (SEC COR 29 30 31 32 T7N R12W)	BL 384
LANCASTR (1968)	2441.244	L+T NE COR CONC DR TO HSE NO 3018 AVE L 75FT S C/L + 195FT W C/L 30TH ST W	BL 385
LANCASTR (1968)	2434.977	L+T NW COR CONC SLAB TO HSE NO 3550 AVE L 65FT S C/L + 139FT E C/L 35TH ST W	BL 386
LANCASTR (1968)	2433.352	CS MON 6IN DN @ C/L INT AVE L + 35TH ST W MKD (1/4 COR SEC 30 31 T7N R12W)(S EDGE)	BL 387
LANCASTR (1968)	2428.381	CS MON 8IN DN @ C/L INT OF AVE L + 40TH ST W MKD (T7N R12W R13W SEC COR 25 30 36 31)(SE EDGE)	BL 388
LANCASTR (1968)	2431.879	L+T IN W EDGE OF 2FT CONC WLK TO APT NO 4012 AVE L 50FT S C/L + 110FT W C/L 40TH ST W	BL 389
LANCASTR (1968)	2428.405	USGS MON @ NW COR AVE L + 45TH ST W 38FT N + 37FT W C/L INT MKD (R 49 1929 RESET 1942)	BL 391
LANCASTR (1968)	2432.363	L+T IN CONC PORCH OF HSE ON NW COR 50TH ST W + AVE L 109FT N + 232FT W C/L INT MKD (BM)	BL 392
BASELINE (1965)	2491.230	CS MON IN WELL 14IN DN @ C/L INT AVE M + 50TH ST W MKD (SEC COR 35 36 2 1 T7N T6N R13W) (W EDGE)	BL 394A
BASELINE (1965)	2496.566	CS MON IN WELL 15IN DN @ C/L INT OF AVE M + 55TH ST W MKD (1/4 COR SEC 35, 2 R-13W T-7N T-6N) USE S EDGE	BL 395

QUAD-YEAR	ELEV	DESCRIPTION (INCLUDE QUAD AND YEAR IN DESCRIPTION)	BM NUMBER
BASELINE (1965)	2500.800	L+T IN CONC WLK TO HSE SW COR AVE M + 55TH ST W 57FT S + 34FT W C/L INT	BL 396
BASELINE (1965)	2513.834	CS MON IN WELL 22IN DN @ C/L INT OF AVE M + 60TH ST W MKD (SEC COR 34 35 3 2 T7N T6N R13W)	BL 397
LANCASTR (1968)	2383.651	CS MON IN WELL 18IN DN @ C/L INT 60TH ST E + AVE H-8 PROP MKD (1/4 SEC COR 11 10 R11W T7N) (S EDGE)	BL 411
LANCASTR (1968)	2386.708	RDBM TAG IN SE COR CONC RESERVOIR @ HSE NO 45609 60TH ST E 110FT W C/L + 55FT N C/L AVE H-8 PROP	BL 412
LANCASTR (1968)	2371.080	CS MON IN WELL 18IN DN @ C/L INT 60TH ST E + AVE H MKD (SEC COR 3 2 10 11 R11W T7N)(S EDGE)	BL 413
LANCASTR (1968)	2361.438	CS MON 18IN DN @ C/L INT 60TH ST E + AVE G-8 MKD (1/4 SEC COR 3 2 R11W T7N)(N EDGE)	BL 415
LANCASTR (1968)	2362.732	L+T NR S EDGE OF CONC WK TO HSE NO 46415 60TH ST E 130FT W C/L + 145FT N C/L AVE G-8 MKD (SLBM)	BL 416
LANCASTR (1968)	2352.914	CS MON 16IN DN @ C/L INT 60TH ST E + AVE G MKD (SEC COR 34 35 3 2 R11W T8N)	BL 417
LANCASTR (1968)	2346.131	L+T IN CONC FENCE POST @ SE COR 60TH ST E + AVE F-8 20FT S + 22FT E C/L INT MKD (SLBM)	BL 419
LANCASTR (1968)	2344.511	CS MON @ C/L INT 60TH ST E + AVE F-8 MKD (1/4 SEC COR 34 35 R11W T8N)(W EDGE)	BL 420
LANCASTR (1968)	2337.170	RD MON 8IN DN @ SW COR AVE F + 60TH ST E 47FT W + 25FT S C/L INT	BL 422
LANCASTR (1968)	2339.543	RD MON IN WELL WITH COVER @ NE COR 65TH ST E + AVE F 24FT N + 42FT E C/L INT 4FT E GUY POLE NO 627428E	BL 424
LANCASTR (1968)	2343.751	RD MON IN WELL W/COVER 8IN DN @ NW COR AVE F + 70TH ST E 34FT N + 25FT W C/L INT 4FT N OF PP NO 373290E	BL 425
LANCASTR (1968)	2343.311	CS MON 16IN DN @ C/L INT AVE F + 70TH ST E MKD (SEC COR 26 25 35 36 R11W T8N)(N EDGE)	BL 426
LANCASTR (1968)	2348.288	L+BN IN CONC FTG OF 36IN STANDPIPE 40FT N C/L AVE F + 31FT W C/L 75TH ST E PROP MKD (SLBM)	BL 427
LANCASTR (1968)	2345.450	CS MON 30IN DN @ C/L INT AVE F + 75TH ST E MKD (1/4 SEC COR 25 36 R11W T8N)(N EDGE)	BL 428
LANCASTR (1968)	2350.171	L+T IN CONC MOTOR PAD @ NW COR AVE F + 80TH ST E PROP 50FT N + 100FT W C/L INT MKD (SLBM)	BL 429
LANCASTR (1968)	2348.627	CS MON @ C/L INT AVE F + 80TH ST E MKD (SEC COR 25 30 36 31 R10W R11W T8N)(E EDGE)	BL 430
LANCASTR (1968)	2350.559	BT SPK IN 2IN IP IN CONC 28IN DN @ C/L INT AVE F + 85TH ST E PROP	BL 432
BASELINE (1965)	2355.341	L+T CONC FOUNDATION OF WATER TOWER 6FT W + 1.5FT N OF SE COR @ NW COR 90TH ST E + AVE F 45FT N + 95FT W C/L INT MKD (SLBM)	BL 433A
BASELINE (1965)	2354.983	CS MON 12IN DN @ C/L INT 90TH ST E + AVE F MKD (SEC COR 30 29 31 32 R10W T8N)(E EDGE)	BL 434A
BASELINE (1965)	2366.329	L+T 1ST STEP OF CONC PORCH OF APT UNIT NO 47205 @ THE NW COR 90TH ST E + AVE F-8 140FT W + 70FT N C/L INT	BL 435A

QUAD-YEAR	ELEV	DESCRIPTION (INCLUDE QUAD AND YEAR IN DESCRIPTION)	BM	NUMBER
BASELINE (1965)	2365.634	2IN IP WITH CONC PLUG + BT SPK @ C/L INT 90TH ST E + AVE F-8	BL	436A
BASELINE (1965)	2373.497	CS MON IN WELL 15IN DN @ C/L INT 90TH ST E + AVE G MKD (SEC COR 31 32 6 5 R10W T8N T7N)	BL	437A
BASELINE (1965)	2374.836	RD MON IN WELL WITH CONC COLLAR @ SE COR 90TH ST E + AVE G 30FT E + 40FT S C/L INT	BL	438A
BASELINE (1965)	2385.796	2IN IP IN CONC WITH BR CAP ON C/L AVE G-8 30FT W C/L 90TH ST E MKD (WC SEC 6 R10W T7N)	BL	439A
BASELINE (1965)	2528.029	USC+GS MON 6IN UP 35FT S C/L AVE M + 87FT W C/L W R Y SIERRA HWY MKD (FF 487 1955)	BL	469
LANCASTR (1968)	2497.857	USC+GS MON 3IN UP 60FT E C/L SIERRA HWY OPP BLDG 42445 44FT W C/L SPRR + 2200FT S AVE L MKD (U 811 1947)	BL	470
LANCASTR (1968)	2486.637	USC+GS MON 12IN DN 60FT E C/L SIERRA HWY OPP BLDG 42607 43FT W C/L SPRR + 1250FT S AVE L MKD (B 57 1926 RESET 1955)	BL	471
LANCASTR (1968)	2447.473	USC+GS MON 3IN UP 59FT E C/L SIERRA HWY 45FT W C/L SPRR + 75FT N C/L PROP AVE K-8 200FT W OF L A CO WATERWORKS DIST 4 WELL 8 STORAGE TANK MKD (T 811 1947)	BL	472
LANCASTR (1968)	2361.082	USC+GS MON 5IN UP IN LUMBER YD @ 44701 YUCCA AVE 310FT W + 185FT N C/L INT YUCCA AVE + NEWGROVE ST 85FT SE SEMAPHORE 4057 + 3FT S TP MKD (G 487 1955)	BL	473
LANCASTR (1968)	2333.202	USGS MON ON 3IN IP 8IN UP IN A V PLUMBING SUPPLY YD @ 45358 SIERRA HWY 161FT E C/L + 1100FT N AVE I 120FT SE OF STUCCO BLDG MKD (2335 B 1902)	BL	474
LANCASTR (1968)	2317.728	USC+GS MON S EDGE HDWL CULV G90+50 25FT W C/L SIERRA HWY + 1.6MI N AVE I MKD (Z 811 1947)	BL	476
LANCASTR (1968)	2305.704	USC+GS MON 10IN UP 34FT E C/L SIERRA HWY + 1450FT S AVE F MKD (Y 56 1926)	BL	477
LANCASTR (1968)	2302.478	USGS MON ON 3IN IP 8IN UP 85FT E C/L SIERRA HWY + 800FT N AVE F MKD (2302 B 1902 33)	BL	478
LANCASTR (1968)	2304.614	USGS TRI STA MON 15IN UP 227FT W C/L SIERRA HWY + 2200FT N AVE F MKD (OBAN 1929 LINT)	BL	479
LANCASTR (1968)	2301.855	USC+GS REF MON 8IN UP 227FT W C/L SIERRA HWY + 2280FT N AVE F MKD (OBAN NO 2 1941)	BL	480
LANCASTR (1968)	2301.213	USC+GS MON FLUSH W END S CONC ABUT OF RR BRIDGE 73FT N C/L AVE E + 121FT E C/L SIERRA HWY MKD (H 487 1955)	BL	481
LANCASTR (1968)	2304.165	USC+GS MON FLUSH TOP OF E END OF S CONC ABUT OF SPRR BRIDGE 88FT N C/L AVE C + 141FT E C/L SIERRA HWY MKD (J 487 1955)	BL	482
LANCASTR (1968)	2305.848	USC+GS MON FLUSH S END W HDWL CULV UNDER SPRR 35FT N C/L AVE B + 122FT E C/L SIERRA HWY MKD (N 487 1955)	BL	483
LANCASTR (1968)	2307.948	USC+GS MON FLUSH N END HDWL OF SPRR CULV 123FT E C/L SIERRA HWY + 175FT S C/L AVE A (KERN CO LINE) MKD (M 487 1955)	BL	484

QUAD-YEAR	ELEV	DESCRIPTION (INCLUDE QUAD AND YEAR IN DESCRIPTION)	BM NUMBER
LANCASTR (1968)	2334.465	RDBM TAG E CB 60FT S BCR @ SE COR DIVISION ST + AVE H-8 20FT E + 135FT S C/L INT	BL 485
LANCASTR (1968)	2332.701	CS MON (N EDGE) IN WELL 18IN DN @ C/L INT AVE H-8 + DIVISION ST MKD (1/4 SEC COR 10 11 T7N R12W)	BL 487
LANCASTR (1968)	2333.667	CS MON 12IN DN @ C/L INT DIVISION ST + AVE H MKD (SEC COR 3-2 10-11 T7N R12W) USE W EDGE	BL 488
LANCASTR (1968)	2328.072	L+T NW COR CONC WALK BLDG NO 46350 @ SE COR OF DIVISION ST + AVE G8 (PROP) 205FT S + 45FT E OF C/L INT	BL 490
LANCASTR (1968)	2326.065	CS BR CAP MON 24IN DN @ C/L INT OF AVE G8 PROP + DIVISION ST MKD (1/4 SEC COR 2-3 T7N R12W)	BL 491
LANCASTR (1968)	2323.045	2IN IP WITH CONC PLUG 12IN UP @ SE COR DIVISION ST + AVE G 35FT S + 35FT E OF C/L INT USE E EDGE	BL 492
LANCASTR (1968)	2320.929	CS BR CAP MON IN WELL 15IN DN @ C/L INT DIVISION ST + AVE G MKD (SEC COR 34-35-3-2 T8N T7N R12W)	BL 493
LANCASTR (1968)	2315.443	L+T @ NE COR CONC SLAB @ SIDE ENT N SIDE OF HSE NO 47159 DIVISION ST 100FT W C/L + 80FT S C/L AVE F-8	BL 494
LANCASTR (1968)	2315.201	L+T @ NE COR CONC SLAB @ SIDE ENT ON N SIDE OF HSE NO 47205 DIVISION ST 100FT W C/L + 115FT N C/L AVE F-8	BL 495
LANCASTR (1968)	2308.699	L+T CONC WK TO HSE NO 47547 DIVISION ST @ SW COR OF AVE F 82FT W + 185FT S OF C/L INT MKD (SL BM)	BL 496
LANCASTR (1968)	2306.781	CS MON 14IN DN @ C/L INT OF AVE F + DIVISION ST MKD (SEC COR 26-27 34-35 R12W T8N)(E EDGE)	BL 497
LANCASTR (1968)	2301.384	CS BR CAP MON 14IN DN @ C/L INT AVE E-8 + DIVISION ST MKD (26-27 R12W T8N)	BL 498
LANCASTR (1968)	2296.008	RD DEPT BM MON IN WELL 6IN DN @ SW COR DIVISION ST + AVE E 27FT W + 51FT S C/L INT 4 FT WLY PP NO 306431E	BL 499
LANCASTR (1968)	2294.466	CS MON (NE EDGE) IN WELL 18IN DN @ C/L INT AVE E + DIVISION ST MKD (SEC COR 22 23 26 27 R12W T8N)	BL 500
LANCASTR (1968)	2296.255	CS MON 14IN DN ON C/L AVE E 2677FT W OF DIVISION ST MKD (T8N 22-27 R12W 1/4 COR)(N EDGE)	BL 501
LANCASTR (1968)	2348.914	RDBM TAG CONC SLAB NR 36IN STANDPIPE 40FT N C/L AVE J + 640FT E 50TH ST W	BL 532
LANCASTR (1968)	2348.192	CS MON IN WELL 20IN DN @ C/L INT AVE J + 50TH ST W MKD (SEC COR 14 13 23 24 T7N R13W)	BL 533
LANCASTR (1968)	2337.987	2IN IP 6IN DN 50FT S + 50FT E C/L INT 50TH ST W + AVE I-8	BL 534
LANCASTR (1968)	2337.900	2IN IP 6IN DN 50FT N + 50FT E C/L INT 50TH ST W + AVE I-8	BL 535
LANCASTR (1968)	2329.856	CS MON IN TOP 12IN CONC POST 5IN UP 89FT N C/L AVE I + 30FT E C/L 45TH ST W MKD (BM 102-9 1957)	BL 537
LANCASTR (1968)	2328.241	USGS MON 12IN UP 36FT W C/L 40TH ST W + 147FT S C/L AVE I 33FT E OF E SIDE HSE 4011 MKD (LINT ALKALI 1929)	BL 538

QUAD-YEAR	ELEV	DESCRIPTION (INCLUDE QUAD AND YEAR IN DESCRIPTION)	BM NUMBER
LANCASTR (1968)	2318.258	CS MON TOP 12IN CONC POST 6IN UP 42FT N C/L AVE I + 63FT E C/L 35TH ST W 39FT E OF DRWY HSE 3355 + 25FT W PP 865024E MKD (BM 102-7 1957)	BL 539
LANCASTR (1968)	2318.052	L+PK TOP NW COR N HDWL OF BRIDGE NO 53-406 22FT N C/L AVE I + 100FT E C/L 30TH ST W	BL 540
LANCASTR (1968)	2317.462	CS MON TOP CONC POST 4IN UP 86FT N C/L AVE I + 2FT W C/L 25TH ST W 4FT S PP 1162700E MKD (BM 102-5 1957)	BL 542
LANCASTR (1968)	2368.963	CS MON 12IN DN @ C/L INT 30TH ST E + AVE H-8 MKD (1/4 COR 7-8 T7N R11W)(E EDGE)	BL 554
LANCASTR (1968)	2361.920	2IN IP 50FT E C/L 30TH ST E + 50FT S C/L AVE H USE SW RIM	BL 555
LANCASTR (1968)	2359.563	CS MON 6IN DN @ C/L INT 30TH ST E + AVE H MKD (SEC COR 5-6-7-8 T7N R11W) USE S EDGE	BL 556
LANCASTR (1968)	2353.475	2IN IP 50FT E C/L 30TH ST E + 50FT S C/L AVE G-8 USE SE RIM	BL 557
LANCASTR (1968)	2350.511	CS MON 8IN DN @ C/L INT 30TH ST E + AVE G-8 MKD (1/4 SEC COR 6-7 T7N R11W) USE S EDGE	BL 558
LANCASTR (1968)	2344.479	2IN IP 50FT E C/L 30TH ST E + 50FT S C/L AVE G USE S EDGE	BL 559
LANCASTR (1968)	2343.542	CS MON 3IN DN @ C/L INT 30TH ST E + AVE G MKD (31-32-5-6 T7N R11W) USE SW EDGE	BL 560
LANCASTR (1968)	2335.198	CS MON 12IN DN @ C/L INT 30TH ST E + AVE F-8 MKD (1/4 COR 31-32 T8N R11W)(S EDGE)	BL 561
LANCASTR (1968)	2336.518	2IN IP 50FT E C/L 30TH ST E + 50FT N C/L AVE F-8 USE NE RIM	BL 562
LANCASTR (1968)	2328.862	2IN IP 50FT E C/L 30TH ST E + 50FT S C/L AVE F	BL 563
LANCASTR (1968)	2327.520	CS MON 15IN DN @ C/L INT 30TH ST E + AVE F MKD (29-30-31-32 T8N R11W) USE E EDGE	BL 564
LANCASTR (1968)	2319.243	CS MON (E EDGE) IN WELL 15IN DN @ C/L INT 30TH ST E + AVE E-8 MKD (1/4 COR 29 30 T8N R11W)	BL 566
LANCASTR (1968)	2297.274	RD MON IN WELL 8IN DN 5FT S PP NO 1270585E 36FT S C/L AVE E + 240FT W C/L 5TH ST E PROP	BL 567
LANCASTR (1968)	2297.399	CS MON (E EDGE) IN WELL @ C/L INT AVE E + PROP 5TH ST E MKD (1/4 COR 23 26 T8N R12W)	BL 568
LANCASTR (1968)	2300.850	CS MON (N EDGE) IN WELL 18IN DN @ C/L INT AVE E + 10TH ST E PROP MKD (SEC COR 23 24 25 26 T8N R12W)	BL 569
LANCASTR (1968)	2302.550	RD MON IN WELL 8IN DN 6FT S PP NO 1270596E 36FT S C/L AVE E 70FT E C/L 10TH ST E (PROPOSED)	BL 570
LANCASTR (1968)	2303.382	RD MON IN WELL 8IN DN 5FT S PP NO 1270605E 40FT S C/L AVE E 240FT W C/L 15TH ST E (PROPOSED)	BL 571
LANCASTR (1968)	2302.945	CS MON 30IN DN @ C/L INT AVE E + 15TH ST E MKD (1/4 COR 24-25 T8N R12W)(W EDGE)	BL 572
LANCASTR (1968)	2310.665	RD MON IN WELL 8IN DN 6FT S PP NO 1270627E 39FT S C/L AVE E + 225FT E C/L 25TH ST E PROP	BL 576

QUAD-YEAR	ELEV	DESCRIPTION (INCLUDE QUAD AND YEAR IN DESCRIPTION)	BM NUMBER
LANCASTR (1968)	2312.120	2IN IP 50FT E C/L 30TH ST E + 50FT S C/L AVE E USE N RIM	BL 577
LANCASTR (1968)	2313.739	RD MON IN WELL 8IN DN 5FT S PP NO 1270648E 28FT S C/L AVE E 260FT W C/L 35TH ST E (PROPOSED)	BL 579
LANCASTR (1968)	2312.964	CS MON (N EDGE) IN WELL 22IN DN @ C/L INT AVE E + 35TH ST E MKD (1/4 SEC COR 20 29 T8N R11W)	BL 580
LANCASTR (1968)	2316.097	RD MON IN WELL 8IN DN 5FT S PP NO 1273708E 30FT S C/L AVE E + 250FT W C/L 40TH ST E (PROPOSED)	BL 581
LANCASTR (1968)	2314.713	CS MON IN WELL 18IN DN @ C/L INT AVE E + 45TH ST E (PROPOSED) MKD (1/4 COR 21-28 T8N R11W) USE N EDGE	BL 583
LANCASTR (1968)	2317.197	CS MON IN WELL 8IN DN @ C/L INT AVE E + 50TH ST E MKD (SEC COR 21-22-27-28 T8N R11W) USE N EDGE	BL 585
LANCASTR (1968)	2318.701	2IN IP 50FT E C/L 50TH ST E + 50FT N C/L AVE E USE N EDGE PUNCH MARK	BL 586
LANCASTR (1968)	2321.329	CS MON IN WELL 8IN DN @ C/L INT AVE E + 55TH ST E MKD (1/4 COR 22 27 R11W T8N)(N EDGE)	BL 587
LANCASTR (1968)	2322.513	L+T IN CONC STANDPIPE 33FT N C/L AVE E + 40FT W C/L 55TH ST E MKD (BM)	BL 588
LANCASTR (1968)	2322.079	CS MON IN WELL 8IN DN @ C/L INT AVE E + 60TH ST E MKD (SEC COR 22-23-26-27 T8N R11W) USE N EDGE	BL 589
LANCASTR (1968)	2322.361	L+T IN CONC SLAB OF GARAGE TO HSE ON NW COR AVE E + 60TH ST E 65FT W + 145FT N C/L INT MKD (BM)	BL 590
LANCASTR (1968)	2329.216	CS MON (E EDGE) IN WELL 18IN DN @ C/L INT 60TH ST E + PROP AVE E-8 MKD (1/4 COR 27 26 T8N R11W)	BL 591
LANCASTR (1968)	2330.517	L+T CONC PUMP BASE 35FT N C/L AVE E-8 + 170FT E C/L 60TH ST E MKD (BM)	BL 592
LANCASTR (1968)	2339.114	L+T 4FT E BCR 38FT N C/L AVE I 50FT E C/L SIERRA HWY	BL 666
LANCASTR (1968)	2338.215	CSBM MON 64FT N C/L AVE I + 168FT E C/L SIERRA HWY MKD (BM 101-132 1957)	BL 667
LANCASTR (1968)	2341.703	L+T 5FT E OF W END CONC PUMP ISL 50FT E C/L TREVOR AVE 60FT S C/L AVE I	BL 668
LANCASTR (1968)	2341.371	L+T N CB (DEP) 24FT E C/L SPEARMAN AVE + 40FT N C/L AVE I	BL 669
LANCASTR (1968)	2352.250	RDBM TAG E CB 49FT N BCR @ NE COR SIERRA HWY + LANCASTER BLVD 116FT N + 30FT E C/L INT	BL 670
LANCASTR (1968)	2356.563	L+T 10FT W BCR @ NW COR DIVISION ST + LANCASTER BLVD FROM W 30FT N + 44FT W C/L INT	BL 671
LANCASTR (1968)	2360.153	USC+GS BR CAP FLUSH IN SHELL OIL CO YARD 150FT N C/L NEWGROVE ST + 175FT E C/L SIERRA HWY MKD (A 57 1926)	BL 672
LANCASTR (1968)	2358.096	L+T CTR CB RET @ SE COR MILLING ST + YUCCA AVE 39FT S + 46FT E C/L INT	BL 673
LANCASTR (1968)	2364.683	L+BRAD S CB 1FT W BCR 30FT S C/L LANCASTER BLVD 43FT W C/L 3RD ST E	BL 675

QUAD-YEAR	ELEV	DESCRIPTION (INCLUDE QUAD AND YEAR IN DESCRIPTION)	BM NUMBER
LANCASTR (1968)	2365.077	L+BRAD E CB 0.5FT S BCR 18FT E C/L 3RD ST E 54FT S C/L LANCASTER BLVD	BL 676
LANCASTR (1968)	2370.919	L+T S CB 3FT E BCR 30FT S C/L LANCASTER BLVD 51FT W C/L 5TH ST E	BL 677
LANCASTR (1968)	2371.780	L+T E CB 2FT S BCR 30FT E C/L 5TH ST E 63FT S C/L LANCASTER BLVD	BL 678
LANCASTR (1968)	2373.655	L+T S CB SERVICE RD 0.5 FT W BCR 70FT S C/L LANCASTER BLVD 50FT W C/L ANDALE AVE	BL 679
LANCASTR (1968)	2379.319	CSBM MON FLUSH 50FT S C/L AVE J + 174FT E C/L SIERRA HWY MKD (BM 101-128 1957)	BL 680
LANCASTR (1968)	2350.426	CS MON 27IN DN @ C/L INT AVE J + 55TH ST W (PROP) MKD (1/4 COR 14-23 R13W T7N)	BL 704
LANCASTR (1968)	2352.709	RD MON IN WELL 8IN DN ON SW COR AVE J + 55TH ST W (PROP) 100FT W + 50FT S C/L INT 2IN IP MARKER 2FT S 3FT UP	BL 705
LANCASTR (1968)	2353.569	CS MON IN WELL 18IN DN @ C/L INT AVE J + 60TH ST W MKD (SEC COR 14-15-22-23 T7N R13W)	BL 706
LANCASTR (1968)	2355.137	RDBM TAG IN COR OF FENCE ON NE COR AVE J + 60TH ST W 33FT N + 43FT E C/L INT	BL 707
LANCASTR (1968)	2347.891	CS MON IN WELL 10IN DN @ C/L INT 60TH ST W + AVE I-8 (PROP) MKD (1/4 COR 14-15 T7N R13W)	BL 708
LANCASTR (1968)	2346.473	RD MON IN WELL 8IN DN ON NW COR 60TH ST W + AVE I-8 (PROP) 95FT N + 50FT W C/L INT 2IN IP MARKER 2FT W 3FT UP	BL 709
LANCASTR (1968)	2348.988	USC+GS BR CAP IN CONC FLOOR OF GUARD HSE OF MIRA LOMA @ SE COR AVE I + 60TH ST W 125FT S + 100FT E C/L INT MKD (U 1153 1961)	BL 710
LANCASTR (1968)	2335.542	USC+GS BR CAP NR COR CONC HDWL @ SW COR AVE I + 50TH ST W 30FT S + 31FT W C/L INT MKD (T 1153 1961)	BL 712
LANCASTR (1968)	2342.385	RDBM TAG ON CONC COLLAR OF SMH (S SIDE) 46FT N C/L AVE I + 9FT E C/L 55TH ST W (PROP)	BL 713
LANCASTR (1968)	2334.204	RDBM TAG IN CONC FTG OF COR FENCE POST ON SW COR 50TH ST W + AVE I 40FT S + 60FT W C/L INT	BL 714
LANCASTR (1968)	2335.500	RDBM TAG IN CONC HDWL BETWEEN 2 CMP ON SW COR 50TH ST W + AVE I 35FT S + 26FT W C/L INT	BL 715
LANCASTR (1968)	2329.809	RDBM TAG ON CONC COLLAR OF SMH RIM NE COR AVE I + 45TH ST W 28FT N + 5FT E C/L INT	BL 716
LANCASTR (1968)	2319.928	L+T IN CONC PORCH OF HSE @ NE COR AVE I + 35TH ST W 125FT N + 100FT E C/L INT MKD (BM)	BL 718
LANCASTR (1968)	2387.976	CS MON FLUSH ON SW COR AVE K + 20TH ST W 39FT S + 39FT W C/L INT MKD (BM 105-4 1958)	BL 719
LANCASTR (1968)	2388.277	L+T CONC DR NR CONC BLOCK POST 42FT S C/L AVE K + 263FT W C/L 25TH ST W MKD (BM)	BL 721
LANCASTR (1968)	2386.291	CS MON IN WELL 20IN DN @ C/L INT AVE K + 30TH ST W MKD (SEC COR 19-20-29-30 R12W T7N) USE N EDGE	BL 722

QUAD-YEAR	ELEV	DESCRIPTION (INCLUDE QUAD AND YEAR IN DESCRIPTION)	BM	NUMBER
LANCASTR (1968)	2385.649	RD MON IN WELL 8IN DN ON SE COR AVE K + 35TH ST W 100FT E + 50FT S C/L INT	BL	724
LANCASTR (1968)	2383.473	CS MON IN WELL 20IN DN @ C/L INT AVE K + 35TH ST W MKD (1/4 COR 19-30 R12W T7N) USE S EDGE	BL	725
LANCASTR (1968)	2382.618	CS MON IN WELL 6IN DN @ C/L INT AVE K + 40TH ST W MKD (SEC COR 19-24-25-30 R12W T7N) (W EDGE)	BL	726
LANCASTR (1968)	2360.328	RD MON IN WELL 8IN DN ON SE COR 30TH ST W + AVE J-8 100FT S + 50FT E C/L INT	BL	729
LANCASTR (1968)	2411.944	CS MON (N EDGE) 15IN DN ON C/L 30TH ST W 12FT N C/L AVE K-8 MKD (1/4 SEC COR 30 29 T7N R12W)	BL	730
LANCASTR (1968)	2414.798	RDBM MON IN WELL 8IN DN ON SE COR 30TH ST W + AVE K-8 92FT S + 50FT E C/L INT	BL	731
LANCASTR (1968)	2360.412	USC+GS MON FLUSH ON NW COR AVE I + 66TH ST W 228FT W + 25FT N C/L INT MKD (H 747 1945)	BL	819
LANCASTR (1968)	2364.960	CSBM MON FLUSH ON NW COR AVE I + 70TH ST W 30FT N + 22FT W C/L INT MKD (BM 102-15 1957)	BL	820
LANCASTR (1968)	2365.536	L+T CONC SLAB OF BLDG ON SW COR AVE I + 70TH ST W 114FT W + 70FT S C/L INT MKD (BM)	BL	821
LANCASTR (1968)	2374.463	L+T W END GAS ISL ON SE COR AVE I + 75TH ST W 115FT E + 90FT S C/L INT MKD (BM)	BL	822
LANCASTR (1968)	2376.356	USC+GS MON FLUSH NE COR AVE I + 75TH ST W 61FT N + 16FT E C/L INT MKD (B 306 1935)	BL	823
LANCASTR (1968)	2390.606	L+T CONC STANDPIPE SE COR AVE I + 80TH ST W 60FT S + 60FT E C/L INT MKD (BM)	BL	824
LANCASTR (1968)	2389.236	CS MON FLUSH NE COR AVE I + 80TH ST W 48FT N + 25FT W C/L INT MKD (BM 102-17 1957)	BL	825
LANCASTR (1968)	2403.747	RDBM TAG IN NE COR CONC WEIR BOX SE COR AVE I + PROP 85TH ST W 32FT S + 25FT E C/L INT	BL	826
LANCASTR (1968)	2399.851	CS MON FLUSH 28FT N C/L AVE I + 7FT E C/L PROP 85TH ST W MKD (BM 102-18 1957)	BL	827
LANCASTR (1968)	2420.195	L+T CONC WK HSE SE COR AVE I + 90TH ST W 83FT S + 60FT E C/L INT MKD (BM)	BL	828
LANCASTR (1968)	2421.769	CS MON NW COR AVE I + 90TH ST W 31FT N + 70FT W C/L INT MKD (BM 102-19 1957)	BL	829
LANCASTR (1968)	2417.686	RDBM MON IN WELL 8IN DN SE COR 90TH ST W + PROP AVE H-8 75FT S + 25FT E C/L INT 2IN IP MARKER 2FT E 3FT UP	BL	830
LANCASTR (1968)	2422.869	L+T IN 24IN CONC STANDPIPE @ SE COR 90TH ST W + PROP AVE H-8 180FT E + 30FT S C/L INT MKD (BM)	BL	831
LANCASTR (1968)	2430.230	RDBM TAG N CB PARKING AREA NW COR 90TH ST W + AVE H 155FT W + 44FT N C/L INT	BL	832
LANCASTR (1968)	2430.629	RDBM TAG W CB PARKING AREA NW COR 90TH ST W + AVE H 250FT N + 50FT W C/L INT	BL	833
LANCASTR (1968)	2428.679	RDBM TAG CONC BASE OF 3IN IP BREATHER SE COR 90TH ST W + PROP AVE G-8 50FT S + 40FT E C/L INT	BL	834
LANCASTR (1968)	2429.921	RDBM MON IN WELL 8IN DN ON NW COR 90TH ST W + PROP AVE G-8 210FT N + 23FT W C/L INT 6FT S PP K5409Y 2IN IP MKR 3FT UP 2FT W	BL	835

QUAD-YEAR	ELEV	DESCRIPTION (INCLUDE QUAD AND YEAR IN DESCRIPTION)	BM NUMBER
LANCASTR (1968)	2424.684	CS MON IN WELL 14IN DN @ C/L INT 90TH ST W + AVE G MKD (SEC COR 31 32 5 6 T8N T7N R13W)	BL 836
LANCASTR (1968)	2416.545	L+T IN CONC WK OF HSE SW COR 90TH ST W + AVE F 380FT S + 85FT W C/L INT MKD (BM)	BL 838
LANCASTR (1968)	2416.636	CS MON 18IN DN @ C/L INT 90TH ST W + AVE F MKD (SEC COR 29 30 31 32 T8N R13W)	BL 839
LANCASTR (1968)	2422.581	CS MON 14IN DN @ C/L INT 90TH ST W + AVE E-8 MKD (T8N R13W 29-30)	BL 840
LANCASTR (1968)	2424.280	L+T IN CONC PORCH STORE BLDG NW COR 90TH ST W + AVE E-8 100FT N + 80FT W C/L INT MKD (BM)	BL 841
LANCASTR (1968)	2433.372	L+T CONC PORCH HSE SW COR 90TH ST W + AVE E 68FT S + 92FT W C/L INT MKD (BM)	BL 843
LANCASTR (1968)	2437.382	CS MON 18IN DN @ C/L INT 90TH ST W + AVE D MKD (SEC COR 17 18 19 20 T8N R13W)	BL 846
LANCASTR (1968)	2440.712	RDBM TAG IN CONC FTG OF 10IN BREATHER NE COR PUMP HSE SE COR 90TH ST W + AVE D 150FT E + 56FT S C/L INT	BL 847
LANCASTR (1968)	2443.842	CS MON 12IN DN @ C/L INT 90TH ST W + AVE C-8 MKD (T8N R13W 17-18)	BL 848
LANCASTR (1968)	2442.994	CS MON 14IN DN @ C/L INT 90TH ST W + AVE C MKD (T8N R13W 7-8-17-18)	BL 850
LANCASTR (1968)	2440.306	CS MON 12IN DN @ C/L INT 90TH ST W + PROP AVE B-8 MKD (T8N R13W 7-8)	BL 852
LANCASTR (1968)	2445.159	RDBM TAG CONC STANDPIPE 30IN UP NW COR 90TH ST W + PROP AVE B-8 30FT N + 55FT W C/L INT	BL 853
LANCASTR (1968)	2438.197	CS MON IN WELL 8IN DN @ C/L INT 90TH ST W + AVE B MKD (5 6 7 8 T8N R13W)	BL 855
LANCASTR (1968)	2428.286	RDBM MON IN WELL 8IN DN SE COR AVE B + 85TH ST W 167FT E + 35FT S C/L INT 2IN IP MARKER 2FT S 3FT UP	BL 857
LANCASTR (1968)	2416.542	CS MON 14IN DN @ C/L INT AVE B + 80TH ST W MKD (SEC COR 4 5 8 9 T8N R13W)	BL 858
LANCASTR (1968)	2416.812	RDBM MON IN WELL 8IN DN @ NE COR AVE B + 80TH ST W 30FT N + 72FT E C/L INT 2IN IP MKR 3FT UP 2FT N	BL 859
LANCASTR (1968)	2408.110	RDBM MON IN WELL 8IN DN NE COR AVE B + PROP 75TH ST W 28FT N + 42FT E C/L INT 2IN IP MARKER 2FT N 3FT UP	BL 861
LANCASTR (1968)	2395.943	CS MON 14IN DN @ C/L INT AVE B + 70TH ST W MKD (T8N R13W 3-4-9-10)	BL 862
LANCASTR (1968)	2397.230	RDBM MON IN WELL 8IN DN NE COR AVE B + 70TH ST W 25FT N + 65FT E C/L INT 2IN IP MARKER 2FT N 3FT UP	BL 863
LANCASTR (1968)	2388.727	RDBM MON IN WELL 8IN DN NE COR AVE B + 65TH ST W 33FT N + 96FT E C/L INT 2IN IP MARKER 2FT N 3FT UP	BL 865
LANCASTR (1968)	2380.815	CS MON 14IN DN @ C/L INT AVE B + 60TH ST W MKD (T8N R13W 2-3-10-11)	BL 866

QUAD-YEAR	ELEV	DESCRIPTION (INCLUDE QUAD AND YEAR IN DESCRIPTION)	BM NUMBER
LANCASTR (1968)	2381.392	USGS MON FLUSH SE COR AVE B + 60TH ST W 27FT S + 32FT E C/L INT MKD (R 27 1929)	BL 867
LANCASTR (1968)	2382.938	L+T IN CONC APRON GARAGE SE COR 60TH ST W + PROP AVE B-8 15FT S + 118FT E C/L INT MKD (BM)	BL 869
LANCASTR (1968)	2381.695	RDBM MON IN WELL 8IN DN SE COR 60TH ST W + PROP AVE C 160FT S + 22FT E C/L INT 2IN IP MARKER 2FT E 3FT UP	BL 871
LANCASTR (1968)	2382.673	RD MON IN WELL 8IN DN NE COR 60TH ST W + AVE C-8 5FT N + 90FT E C/L INT 2IN IP MARKER 2FT N 3FT UP	BL 873
LANCASTR (1968)	2384.629	USC+GS BR CAP IN CONC HDWL @ NE COR AVE D + 60TH ST W 30FT N + 30FT E C/L INT MKD (B1154 1961)	BL 874
LANCASTR (1968)	2385.093	ST HWY BR CAP IN CONC IN HDWL NW COR 60TH ST W + AVE D 40FT N + 24FT W C/L INT	BL 875
LANCASTR (1968)	2375.258	1-1/2IN IP WITH CUT SPK 14IN DN @ C/L INT 60TH ST W + AVE D-8	BL 876
LANCASTR (1968)	2375.568	L+T IN CONC SLAB OF HSE SE COR 60TH ST W + AVE D-8 120FT E + 70FT S C/L INT	BL 877
LANCASTR (1968)	2359.938	CS MON 6IN DN @ C/L INT 60TH ST W + PROP AVE E MKD (T8N R13W 22-23-26-27)	BL 878
LANCASTR (1968)	2358.406	RD MON IN WELL 8IN DN SW COR 60TH ST W + PROP AVE E 115FT S + 30FT W C/L INT 2IN IP MARKER 2FT W 3FT UP	BL 879
LANCASTR (1968)	2355.427	1-1/2IN IP 14IN DN @ C/L INT 60TH ST W + PROP AVE E-8 USE S EDGE	BL 880
LANCASTR (1968)	2354.737	L+T CONC PORCH CHURCH BLDG 107FT E C/L 60TH ST W + 630FT S PROP AVE E-8	BL 881
LANCASTR (1968)	2352.680	L+T 2IN DN @ C/L INT 60TH ST W + AVE F	BL 882
LANCASTR (1968)	2353.253	CS MON 2IN UP SE COR 60TH ST W + AVE F 31FT S + 75FT E C/L INT MKD (BM 103-11 1957)	BL 883
LANCASTR (1968)	2352.065	L+T IN CONC CROSS GUTTER @ C/L INT 60TH ST W + PROP AVE F-8	BL 884
LANCASTR (1968)	2352.625	RDBM TAG IN CONC FTG 5FT CHAIN LINK FEN AROUND AIRPORT SE COR 60TH ST W + PROP AVE F-8 60FT S + 50FT E C/L INT	BL 885
LANCASTR (1968)	2352.287	RDBM TAG SE COR FTG OF AIRPORT FENCE @ NE COR 60TH ST W + AVE G 50FT N + 50FT E C/L INT	BL 886
LANCASTR (1968)	2353.636	CS MON IN WELL 18IN DN @ C/L INT 60TH ST W + AVE G MKD (T7N T8N R13W 2-3-34-35)	BL 887
LANCASTR (1968)	2357.313	CS MON IN WELL 17IN DN @ C/L INT 60TH ST W + PROP AVE G-8 MKD (T7N R13W 2-3)	BL 888
LANCASTR (1968)	2358.167	RD MON IN WELL 8IN DN SW COR 60TH ST W + PROP AVE G-8 180FT S + 31FT W C/L INT 2IN IP MARKER 2FT W 3FT UP	BL 889
LANCASTR (1968)	2352.135	CS MON 3IN UP SE COR 60TH ST W + PROP AVE H-8 42FT S + 42FT E C/L INT MKD (BM 103-16 1957)	BL 893

QUAD-YEAR	ELEV	DESCRIPTION (INCLUDE QUAD AND YEAR IN DESCRIPTION)	BM NUMBER
LANCASTR (1968)	2389.285	CS MON 8IN DN @ C/L INT AVE D + PROP 65TH ST W MKD (T8N R13W 22-15) (E EDGE)	BL 894
LANCASTR (1968)	2390.498	RDBM MON IN WELL 8IN DN NW COR AVE D + PROP 65TH ST W 30FT N + 180FT W C/L INT 2IN IP MARKER 2FT N 3FT UP	BL 895
LANCASTR (1968)	2397.352	CS MON (N EDGE) IN WELL 18IN DN @ C/L INT AVE D + 70TH ST W MKD (15 16 21 22 T8N R13W)	BL 896
LANCASTR (1968)	2411.123	RDBM TAG IN 12IN CONC STANDPIPE NE COR AVE D + 75TH ST W 55FT N + 40FT E C/L INT	BL 898
LANCASTR (1968)	2407.674	CS MON (E EDGE) IN WELL 16IN DN @ C/L INT 75TH ST W + AVE D MKD (16 21 T8N R13W)	BL 899
LANCASTR (1968)	2416.101	CS MON IN WELL 24IN DN @ C/L INT 80TH ST W + AVE D MKD (16 17 20 21 T8N R13W)	BL 900
LANCASTR (1968)	2418.324	L+T IN NW CONC FTG OF HAY BARN ON SE COR AVE D + 80TH ST W 32FT S + 50FT E C/L INT MKD (BM)	BL 901
LANCASTR (1968)	2426.573	RDBM MON IN WELL 8IN DN NE COR AVE D + 85TH ST W 105FT E + 28FT N C/L INT 2IN IP MARKER 2FT N 3FT UP	BL 902
LANCASTR (1968)	2426.170	CS MON (E EDGE) IN WELL 14IN DN @ C/L INT AVE D + 85TH ST W MKD (17 20 T8N R13W)	BL 903
BASELINE (1965)	2567.044	CSBM MON 5IN UP 30FT S + 90FT W C/L INT AVE M + 65TH ST W MKD (BM 104-16 1958)	BL 904
BASELINE (1965)	2610.051	CSBM MON 5IN UP 76FT N + 44FT W C/L INT AVE M + 70TH ST W 4FT N PP 1183862E MKD (BM 104-17 1958)	BL 905
LANCASTR (1968)	2515.556	CSBM MON 5IN UP ON SW COR 70TH ST W + AVE L-8 66FT S + 46FT W C/L INT MKD (BM 104-18 1958)	BL 906
LANCASTR (1968)	2445.041	CSBM MON 4IN UP ON SW COR 70TH ST W + AVE L 78FT S + 28FT W C/L INT MKD (BM 104-19 1958)	BL 907
LANCASTR (1968)	2378.544	CSBM MON 5IN UP ON NW COR 70TH ST W + AVE K 32FT N + 32FT W C/L INT MKD (BM 104-21 1958)	BL 909
LANCASTR (1968)	2362.636	CSBM MON 5IN UP ON NW COR 70TH ST W + AVE J-8 280FT N + 30FT W C/L INT MKD (BM 104-22 1958)	BL 910
LANCASTR (1968)	2357.991	CSBM MON 5IN UP ON SW COR AVE J + 70TH ST W 55FT S + 30FT W C/L INT MKD (BM 104-23 1958)	BL 911
LANCASTR (1968)	2359.698	CSBM MON 5IN UP ON NW COR 70TH ST W + AVE I-8 250FT N + 26FT W C/L INT MKD (BM 104-24 1958)	BL 912
BASELINE (1965)	2443.302	CSBM MON 4IN UP NR SW COR EDISON PIUTE SUBSTA 45FT N C/L AVE J + 40FT E C/L 90TH ST E MKD (BM 107-24 1961)	BL 1075A
BASELINE (1965)	2342.906	CSBM MON 6IN UP 32FT E C/L 90TH ST E + 46FT S C/L AVE E 7FT SE PP 538296E MKD (BM 106-122 1959)	BL 1165A
BASELINE (1965)	2347.985	RDBM TAG CONC FOOTING OF SUPPORT @ NW COR HAY SHED 50FT E C/L 90TH ST E + 50FT S C/L AVE E-8	BL 1167A
BASELINE (1965)	2356.764	CSBM MON 2IN UP 30FT N C/L AVE F + 77FT E C/L 90TH ST E MKD (BM 116-6 1961)	BL 1168A
BASELINE (1965)	2366.411	CSBM MON 2IN UP 80FT N C/L AVE F-8 + 30FT E C/L 90TH ST E MKD (BM 116-5 1961)	BL 1169A

QUAD-YEAR	ELEV	DESCRIPTION (INCLUDE QUAD AND YEAR IN DESCRIPTION)	BM NUMBER
BASELINE (1965)	2375.974	CSBM MON 2IN UP 27FT W C/L 90TH ST E + 70FT S C/L AVE G MKD (BM 116-4 1961)	BL 1170A
BASELINE (1965)	2385.417	CSBM MON 4IN UP 80FT E C/L 90TH ST E + 20FT S C/L AVE G-8 25FT W PP 951530E MKD (BM 116-3 1961)	BL 1171A
BASELINE (1965)	2396.705	CSBM MON 4IN UP 35FT N + 115FT E C/L INT AVE H + 90TH ST E MKD (BM 116-2 1961)	BL 1172A
BASELINE (1965)	2404.074	CSBM MON 3IN UP 30FT E C/L 90TH ST E + 155FT N C/L AVE H-8 MKD (BM 116-1 1961)	BL 1173A
BASELINE (1965)	2414.984	CSBM MON 4IN UP 68FT W C/L 90TH ST E + 30FT S C/L AVE I 2FT E PP 955497E MKD (BM 107-26 1961)	BL 1174A
BASELINE (1965)	2425.699	CSBM MON 4IN UP 35FT E C/L 90TH ST E + 550FT N AVE I-8 3FT E PP 771405E MKD (BM 107-25 1961)	BL 1175A
BASELINE (1965)	2456.666	CSBM MON 4IN UP 90FT W C/L 90TH ST E + 29FT S C/L AVE J-8 1FT N OF N P/L GLENDALE AUTO PARTS YD MKD (BM 107-23 1961)	BL 1177A
BASELINE (1965)	2475.491	CSBM MON 27FT W C/L 90TH ST E + 60FT S C/L AVE K 2FT W TP K9248Y MKD (BM 107-22 1961)	BL 1178A
BASELINE (1965)	2490.521	CSBM MON 3IN UP 33FT E C/L 90TH ST E + 45FT S C/L AVE K-8 3FT E PP 771366E MKD (BM 107-21 1961)	BL 1179A
BASELINE (1965)	2498.235	CSBM MON 60FT W C/L 90TH ST E + 30FT S C/L AVE L 3FT S PP 800334E MKD (BM 107-20 1961)	BL 1180A
BASELINE (1965)	2513.407	CSBM MON 34FT E C/L 90TH ST E + 35FT N C/L AVE L-8 3FT S PP 771347E MKD (BM 107-19 1961)	BL 1181A
BASELINE (1965)	2526.141	CSBM MON 4IN UP 36FT N C/L AVE M + 36FT E C/L 90TH ST E MKD (BM 107-18 1961)	BL 1182A
LANCASTR (1968)	2448.752	CS MON 14IN DN @ C/L INT AVE D (PAVED) + 95TH ST W (DIRT RD) MKD (T8N R13W 1/4 SEC COR 18-19) (NW EDGE)	BL 1208
LANCASTR (1968)	2461.594	RDBM TAG 1FT N OF S EDGE + 8FT E OF W EDGE CONC SLAB 110FT N C/L AVE D + 215FT E C/L 100TH ST W	BL 1209
LANCASTR (1968)	2460.563	CS MON (S EDGE) IN WELL 20IN DN @ C/L INT AVE D + 100TH ST W MKD (SEC COR 13 18 19 24 T8N R13W R14W)	BL 1210
LANCASTR (1968)	2474.590	L+BN IN CONC AROUND 3IN IP 77FT N C/L AVE D + 22FT E C/L 105TH ST W (DIRT RD)	BL 1211
LANCASTR (1968)	2472.137	CS MON 24IN DN @ C/L INT AVE D + 105TH ST W (DIRT RD) MKD (T8N R14W 1/4 SEC COR 13,24) (W EDGE)	BL 1212
BASELINE (1965)	2485.338	CS MON (SW EDGE) IN WELL 14IN DN @ C/L INT AVE D + 110TH ST W MKD (SEC COR 13 14 23 24 T8N R14W)	BL 1213
BASELINE (1965)	2497.288	CS MON IN WELL 15IN DN 5FT N C/L INT AVE I + 110TH ST W MKD (SEC COR 11 12 13 14 R14W T7N)	BL 1303
LANCASTR (1968)	2480.893	USC+GS MON FLUSH 33FT N C/L AVE I + 125FT W C/L 105TH ST W 14FT SE OF SW COR EDISON TOWER 57-4 MKD (A 306 1935)	BL 1304
LANCASTR (1968)	2477.217	CS MON IN WELL 14IN DN @ C/L INT AVE I + 105TH ST W MKD (1/4 COR 12 13 R14W T7N)	BL 1305

QUAD-YEAR	ELEV	DESCRIPTION (INCLUDE QUAD AND YEAR IN DESCRIPTION)	BM NUMBER
LANCASTR (1968)	2455.975	CS MON IN WELL 18IN DN @ C/L INT AVE I + 100TH ST W MKD (SEC COR 7 12 13 18 T7N R14W R13W)	BL 1306
LANCASTR (1968)	2436.745	CSBM MON FLUSH 56FT S C/L AVE I @ 95TH ST W UNDER EDISON TOWER M2624 MKD (BM 102-21 1957)	BL 1307
LANCASTR (1968)	2417.643	USGS MON 24IN UP 298FT E C/L 90TH ST W + 0.2MI N AVE I 89FT S FIELD RD TO HAYSHED 274FT NE OF NE COR METAL SHED OVER WELL MKD (LINT DEL SUR)	BL 1308
BASELINE (1965)	2525.428	CSBM MON 5IN UP 34FT N C/L AVE M + 175FT E C/L 35TH ST W 6FT E PP 1054605E MKD (BM 104-7 1958)	BL 1373A
BASELINE (1965)	2516.776	CS MON IN WELL @ C/L INT AVE M + 35TH ST W MKD (1/4 COR 31 6 R12W T7N T6N)	BL 1374A
BASELINE (1965)	2567.496	CS MON IN WELL 18IN DN @ C/L INT AVE M + 45TH ST W ON CREST OF HILL 800FT W QUARTZ HILL RD MKD (1/4 SEC 1 36 T6N T7N R13W)	BL 1376
BASELINE (1965)	2529.461	CSBM MON 4IN UP 28FT S + 41FT W C/L INT AVE M + 47TH ST W 4FT W PP 168073E MKD (BM 104-12 1958)	BL 1377A
BASELINE (1965)	2528.638	CSBM MON END OF N HDWL ON NE COR AVE M + SIERRA HWY 3FT N + 248FT E C/L INT	BL 1425
LANCASTR (1968)	2463.873	USGS MON 10IN UP (LEANING N) 0.25MI N AVE L + 150FT E C/L SIERRA HWY MKD (2462 B 36 1902) MARKER POST 1FT W	BL 1426
LANCASTR (1968)	2423.171	CSBM MON 2IN DN ON SE COR SIERRA HWY + AVE K 198FT S + 62FT E C/L INT MKD (BM 101-126 1957)	BL 1427
LANCASTR (1968)	2422.179	L+BN SE COR CONC APRON OF GAS STA ON SW COR SIERRA HWY + AVE K 133FT S + 61FT W C/L INT MKD (BL)	BL 1428
LANCASTR (1968)	2396.850	RDBM TAG N CB 1FT W BCR @ NW COR SIERRA HWY + AVE J8 86FT W + 18FT N C/L INT	BL 1429
LANCASTR (1968)	2326.680	L+BR W CB 1FT N BCR @ SW COR AVE H8 + BEECH AVE 49FT S + 20FT W C/L INT	BL 1430
LANCASTR (1968)	2325.995	SQ HD SPK N CB 4FT W BCR @ NW COR AVE H8 + BEECH AVE 25FT N + 48FT W C/L INT	BL 1431
LANCASTR (1968)	2326.008	RDBM TAB W END OF N HDWL ON NW COR SIERRA HWY + AVE H 30FT N + 49FT W C/L INT	BL 1432
LANCASTR (1968)	2325.328	CSBM MON 3IN UP ON NE COR SIERRA HWY + AVE H 155FT N + 90FT E C/L INT MKD (BM 101-135 1957)	BL 1433
LANCASTR (1968)	2316.729	6X6 CONC POST W/RAM SET 50FT S CULV G90+50 57FT W C/L SIERRA HWY + 0.6MI N AVE H POST MKD (C)	BL 1434
LANCASTR (1968)	2314.530	CS MON ON NE COR SIERRA HWY + AVE G 124FT N + 97FT E C/L INT MKD (BM 101-137 1957)	BL 1435
LANCASTR (1968)	2314.535	RDBM TAG CTR OF S HDWL ON NW COR SIERRA HWY + AVE G 185FT N + 35FT W C/L INT	BL 1436
LANCASTR (1968)	2308.107	RDBM TAG CTR OF S HDWL ON NW COR SIERRA HWY + AVE F8 (PROP) 200FT N + 50FT W C/L INT	BL 1437
LANCASTR (1968)	2307.909	L+BN CTR OF N HDWL ON NW COR SIERRA HWY + AVE F8 (PROP) 225FT N + 50FT W C/L INT MKD (BM)	BL 1438
LANCASTR (1968)	2306.741	RDBM TAG CONC BASE OF SEMAPHORE NO 4022 123FT E C/L SIERRA HWY + 0.1MI S AVE F	BL 1439

QUAD-YEAR	ELEV	DESCRIPTION (INCLUDE QUAD AND YEAR IN DESCRIPTION)	BM NUMBER
LANCASTR (1968)	2302.406	RD HD SPK IN CHIS SQ N END E HDWL BRIDGE @ G215 +50 ON NE COR SIERRA HWY + AVE E 88FT N + 43FT E C/L INT	BL 1440
LANCASTR (1968)	2302.294	L+PK NAIL N END OF E HDWL OF BRIDGE NO 53-510 0.15MI S AVE D8 (PROP) 25FT E C/L SIERRA HWY	BL 1441
LANCASTR (1968)	2299.280	CSBM MON 2IN UP ON SE COR SIERRA HWY + AVE D8 (PROP) 90FT E + 250FT S C/L INT MKD (BM 101-144 1957)	BL 1442
LANCASTR (1968)	2303.516	RDBM TAG W CB SIERRA HWY (E CB OF ISLAND) 31FT W C/L + 20FT S C/L AVE D (HWY 138)	BL 1443
LANCASTR (1968)	2301.791	L+PK NAIL CTR OF N HDWL ON NW COR SIERRA HWY + AVE D (HWY 138) 172FT W + 50FT N C/L INT	BL 1444
LANCASTR (1968)	2303.176	6X6 CONC POST W/NAIL 10IN UP ON SW COR SIERRA HWY + AVE C8 (PROP) NR NE COR CO SANITATION DIST YD NO 14 50FT S + 56FT W C/L INT POST MKD (C)	BL 1445
LANCASTR (1968)	2301.525	CSBM MON 2IN UP ON NE COR SIERRA HWY + PROPOSED AVE C8 275FT N + 40FT E C/L INT MKD (BM 101-146 1957)	BL 1446
LANCASTR (1968)	2304.816	RDBM TAG N END BRIDGE 53-512 25FT W C/L SIERRA HWY + 90FT N C/L AVE C	BL 1447
LANCASTR (1968)	2304.405	RDBM TAG N END CONC HDWL 25FT W C/L SIERRA HWY + 0.6MI N AVE C	BL 1448
LANCASTR (1968)	2304.217	8IN DIA CONC POST W/IRON SPK 35FT E C/L SIERRA HWY 0.75MI N AVE C 2FT IP MARKER 1FT S MKD (W56)	BL 1449
LANCASTR (1968)	2303.624	WIRE SPK S END CONC HDWL OF CULV G383+10 25FT E C/L SIERRA HWY + 106FT S C/L AVE B	BL 1450
LANCASTR (1968)	2307.299	RD HD SPK S END E HDWL BRIDGE 53-514 25FT E C/L SIERRA HWY + 0.65MI N AVE B MKD (BM 101-150)	BL 1451
LANCASTR (1968)	2307.355	RDBM TAG N END W HDWL BRIDGE 53-514 25FT W C/L SIERRA HWY + 0.65MI N AVE B	BL 1452
LANCASTR (1968)	2307.215	WIRE SPK S END CONC HDWL OF CULV G426+19 ON SE COR SIERRA HWY + AVE A 25FT E + 208FT S C/L INT	BL 1453
LANCASTR (1968)	2306.529	RDBM TAG CTR N HDWL OF CULV L 1237+60 23FT N C/L AVE D + 15FT W C/L 15TH ST W (PROP)	BL 1455
LANCASTR (1968)	2312.688	USC+GS BR DISK IN NW COR OF E CONC HDWL @ ENT TO SANITATION DIST NO 14 YD 39FT N C/L AVE D + 155FT E C/L PROP 20TH ST W MKD (D1154 1961)	BL 1456
LANCASTR (1968)	2311.701	L+PK IN W END CONC GATE PAD TO SANITATION DIST NO 14 YD 40FT N C/L AVE D + 125FT E C/L PROP 20TH ST W MKD (2314.170)	BL 1457
LANCASTR (1968)	2317.942	RDBM TAG CTR OF CONC HDWL L 1185+00 23FT N C/L AVE D + 75FT E C/L PROP 25TH ST W	BL 1458
LANCASTR (1968)	2319.415	RDBM TAG CTR OF CONC HDWL L 1176+00 21FT N C/L AVE D + 816FT W C/L PROP 25TH ST W	BL 1459
LANCASTR (1968)	2328.057	CHIS X ON ANCHOR BOLT IN WATER TANK FOOTING ON NE COR AVE D + 30TH ST W (PROP) 127FT N + 3FT E C/L INT	BL 1460

QUAD-YEAR	ELEV	DESCRIPTION (INCLUDE QUAD AND YEAR IN DESCRIPTION)	BM NUMBER
LANCASTR (1968)	2334.655	RDBM TAG CTR CONC HDWL L 1134+00 21FT N C/L AVE D + 330FT E C/L PROP 35TH ST W	BL 1462
LANCASTR (1968)	2337.811	RDBM TAG CTR CONC HDWL L 1125+00 21FT N C/L AVE D + 570FT W C/L PROP 35TH ST W	BL 1463
LANCASTR (1968)	2343.127	USGS MON 12IN UP ON SE COR AVE D + 40TH ST W 40FT S + 12FT E C/L INT MKD (R46 1929) (NW 1/4)	BL 1464
LANCASTR (1968)	2345.166	RDBM TAG CTR CONC HDWL L 1101+00 21FT N C/L AVE D + 356FT W C/L PROP 40TH ST W	BL 1465
LANCASTR (1968)	2351.250	STATE HWY BR CAP CTR CONC HDWL L 1085+00 21FT N C/L AVE D + 964FT E C/L PROP 45TH ST W	BL 1466
LANCASTR (1968)	2354.058	CS MON 20IN DN ON C/L INT AVE D + 45TH ST W MKD (1/4 SEC COR 13-24 T8N R13W)	BL 1467
LANCASTR (1968)	2367.021	USC+GS REF MON 6IN UP ON NE COR AVE D + 50TH ST W 95FT N + 61FT E C/L INT MKD (AVENUE NO 1 1960)	BL 1468
LANCASTR (1968)	2367.769	USC+GS MON 4IN UP ON NW COR AVE D + 50TH ST W 102FT N + 92FT W C/L INT MKD (AVENUE 1960)	BL 1469
LANCASTR (1968)	2375.679	RDBM TAG CTR OF CONC HDWL L 1030+00 21FT N C/L AVE D + 490FT E C/L PROPOSED 55TH ST W	BL 1470
LANCASTR (1968)	2377.567	2IN IP W/CUT SPK + CONC COLLAR ON C/L PROP 55TH ST W + 45FT S C/L AVE D	BL 1471
LANCASTR (1968)	2319.785	RDBM TAG W CB 1FT N BCR @ NW COR AVE I + 23RD ST W 76FT N + 30FT W C/L INT	BL 1472
LANCASTR (1968)	2458.548	CS MON IN WELL 24IN DN @ C/L INT 50TH ST W + AVE L8 MKD (1/4 SEC COR 35-36 T7N R13W 1928)	BL 1473
LANCASTR (1968)	2363.731	CS MON IN WELL 12IN DN @ C/L INT 50TH ST W + PROPOSED AVE J8 MKD (1/4 COR 23-24 R13W T7N) USE S EDGE	BL 1474
LANCASTR (1968)	2392.633	CHIS (X) ON S SIDE OF SMH RIM @ SW COR AVE K + 15TH ST W 20FT S + 5FT W C/L INT	BL 1476
LANCASTR (1968)	2393.244	CHIS (X) ON W BOLT OF FIRE HYDT ON SW COR AVE K + 15TH ST W 40FT S + 65FT W C/L INT	BL 1477
LANCASTR (1968)	2366.260	CS MON 2IN UP ON C/L 15TH ST E 30FT S C/L AVE I 12FT N + 12FT E PP 1491371E MKD (WC SEC 13 T7N R12W)(W EDGE)	BL 1478
LANCASTR (1968)	2378.333	L+BN CONC FOOTING OF GATEPOST SW COR AVE K + 70TH ST W 40FT S + 103 FT W APPROX C/L INT MKD (BM)	BL 1804
LANCASTR (1968)	2381.967	2IN IP WITH CE TAG 6IN UP ON SE COR AVE K + 75TH ST W PROP 50FT S + 50FT E APPROX C/L INT	BL 1805
LANCASTR (1968)	2380.363	CS MON 12IN DN IN WELL @ C/L INT AVE K + 75TH ST W MKD (21 28 T7N R12W)	BL 1806
LANCASTR (1968)	2395.809	CS MON IN WELL 18IN DN @ C/L INT AVE K + 80TH ST W MKD (20 21 28 29 T7N R13W)	BL 1807
LANCASTR (1968)	2399.285	2IN IP WITH CE TAG 6IN UP ON SW COR AVE K + 80TH ST W 50FT S + 50FT W APPROX C/L INT	BL 1808
LANCASTR (1968)	2427.611	CS MON IN WELL 10IN DN @ C/L INT AVE K + 85TH ST W MKD (1/4 COR 20 29 T7N R13W)	BL 1809

QUAD-YEAR	ELEV	DESCRIPTION (INCLUDE QUAD AND YEAR IN DESCRIPTION)	BM NUMBER
LANCASTR (1968)	2430.085	2IN IP WITH CE TAG 8IN UP ON NW COR AVE K + 85TH ST W PROP 50FT N + 50FT W APPROX C/L INT (N EDGE)	BL 1810
LANCASTR (1968)	2470.008	1.5IN IP + BRAD FLUSH ON SE COR AVE K + 90TH ST W 50FT S + 50FT E APPROX C/L INT	BL 1811
LANCASTR (1968)	2491.433	1.5IN IP NR CTR TOWER NO 35-1 75FT S C/L AVE K + 600FT W C/L 90TH ST W (S EDGE)	BL 1812
LANCASTR (1968)	2523.768	2IN IP WITH CE TAG 2IN DN ON SE COR AVE K + 95TH ST W PROP 50FT S + 50FT E APPROX C/L INT	BL 1813
LANCASTR (1968)	2523.708	2IN IP WITH CE TAG 4IN DN ON NW COR AVE K + 95TH ST W PROP 50FT N + 50FT W APPROX C/L INT	BL 1814
LANCASTR (1968)	2583.162	RDBM MON 8IN DN 20FT E C/L 100TH ST W PROP ON TP LINE + 90FT N C/L AVE K 2IN IP MARKER 3FT UP + 2FT N	BL 1816
LANCASTR (1968)	2530.583	RDBM MON 8IN DN ON TP LINE 20FT E C/L 100TH ST W + 33FT N C/L AVE J-8 2IN IP MKR 3FT UP 2FT N	BL 1818
LANCASTR (1968)	2470.735	CS MON 18IN DN IN WELL @ C/L INT AVE J + 100TH ST W MKD (SEC COR 24 19 13 18 R13W R14W T7N)	BL 1819
LANCASTR (1968)	2467.267	L+BN CONC FOOTING TOWER 25-5 100FT E C/L 100TH ST W + 500FT N AVE J	BL 1820
LANCASTR (1968)	2456.449	2IN IP 12IN UP ON SE COR 100TH ST W PROP + AVE I-8 PROP 40FT S + 40FT E APPROX C/L INT	BL 1821
LANCASTR (1968)	2454.545	CS MON 6IN DN @ C/L INT 100TH ST W + FUT AVE I-8 MKD (1/4 COR 13 18 T7N R13W R14W)	BL 1822
BASELINE (1965)	2610.458	CS MON IN WELL 8IN DN @ C/L INT AVE M + 70TH ST W MKD (33 34 4 3 T6N T7N R13W)	BL 1997
BASELINE (1965)	2561.273	CS MON IN WELL 22IN DN @ C/L INT AVE M + 65TH ST W MKD (1/4 COR 34 3 T6N T7N R13W)	BL 1998
BASELINE (1965)	2512.526	L+BN CONC BASE FIRE HYD PROTECTION PIPE @ NE COR AVE M + 60TH ST W 75FT N + 40FT E C/L INT MKD (BM)	BL 1999
BASELINE (1965)	2501.276	CSBM MON 4IN UP ON SW COR AVE M + 55TH ST W 39FT S + 37FT W C/L INT MKD (BM 104-14 1958)	BL 2000
BASELINE (1965)	2519.783	CSBM MON 4IN UP ON NE COR AVE M + 25TH ST W 34FT N + 60FT E C/L INT MKD (BM 104-5 1958)	BL 2001
BASELINE (1965)	2519.273	CS MON IN WELL 6IN DN @ C/L INT AVE M + 15TH ST W MKD (1/4 COR 33 4 T7N T6N R12W)	BL 2002
BASELINE (1965)	2518.450	CSBM MON 4IN UP ON NE COR AVE M + 15TH ST W 31FT N + 215FT E C/L INT MKD (BM 104-3 1958)	BL 2003
BASELINE (1965)	2522.622	CS MON 21IN DN IN WELL @ C/L INT AVE M + 10TH ST W MKD (SEC COR 3 4 33 34 T7N T6N R12W 1928)	BL 2004
BASELINE (1965)	2524.455	USC+GS MON 3IN UP ON NE COR AVE M + 10TH ST W 62FT E + 33FT N C/L INT MKD (C 489 1955)	BL 2005
BASELINE (1965)	2528.538	CS MON IN WELL 21IN DN @ C/L INT AVE M + 5TH ST W MKD (1/4 COR 34 3 T7N T6N R12W)	BL 2006
LANCASTR (1968)	2436.495	RDBM MON IN WELL 8IN DN ON SW COR 90TH ST W + AVE D-8 210FT S + 46FT W C/L INT 2IN IP MKR 3FT UP 2FT W	BL 2007

QUAD-YEAR	ELEV	DESCRIPTION (INCLUDE QUAD AND YEAR IN DESCRIPTION)	BM NUMBER
BASELINE (1965)	2532.284	RDBM TAG N CB AVE M 40FT N C/L + 250FT E C/L 5TH ST W IN FRONT OF COUNTY DISPATCH CENTER	BL 2008
BASELINE (1965)	2519.419	CSBM MON IN CONC POST 4IN UP ON NW COR AVE M + 5TH ST E 40FT N + 100FT W C/L INT MKD (BM 121-1 1961)	BL 2009
BASELINE (1965)	2518.546	CS MON 8IN DN IN WELL @ C/L INT AVE M + 5TH ST E MKD (1/4 COR 35 2 T6N T7N R12W)	BL 2010
BASELINE (1965)	2504.285	CSBM MON 4IN UP ON NW COR AVE M + 10TH ST E 72FT N + 40FT W C/L INT MKD (BM 121-2 1961)	BL 2011
BASELINE (1965)	2504.101	CS MON IN WELL 8IN DN @ C/L INT AVE M + 10TH ST E MKD (SEC COR 35 36 1 2 R12W T6N T7N)	BL 2012
BASELINE (1965)	2487.357	CSBM MON 4IN UP ON SW COR AVE M + 15TH ST E 40FT S + 50FT W C/L INT MKD (BM 121-3 1961)	BL 2013
BASELINE (1965)	2486.367	L+BN CONC FOOTING 4FT BARBED WIRE FENCE @ SE COR AVE M + 15TH ST E 40FT S + 30FT E C/L INT MKD (BM)	BL 2014
BASELINE (1965)	2477.314	CSBM MON 4IN UP ON SW COR AVE M + 20TH ST E 68FT W + 40FT S C/L INT MKD (BM 121-4 1961)	BL 2015
BASELINE (1965)	2476.204	L+BN CONC FOOTING 7FT CHAIN LINK FENCE @ NW COR AVE M + 20TH ST E 50FT N + 45FT W C/L INT MKD (BM)	BL 2016
BASELINE (1965)	2470.415	CSBM MON 4IN UP 38FT S C/L AVE M + 229FT W C/L 25TH ST E MKD (BM 121-5 1961) 2IN IP MKR 3FT UP 2FT N	BL 2017A
BASELINE (1965)	2469.979	L+BN CONC FOOTING 7FT CHAIN LINK FENCE ON NE COR AVE M + 25TH ST E 40FT N + 500FT E C/L INT MKD (BM)	BL 2018A
BASELINE (1965)	2471.165	CSBM MON 4IN UP ON SW COR AVE M + 30TH ST E 38FT S + 125FT W C/L INT MKD (BM 121-6 1961) 2IN IP MKR 3FT UP 2FT N	BL 2019A
BASELINE (1965)	2471.606	L+BN CONC FOOTING COR FENCE POST @ SE COR AVE M + 30TH ST E 40FT S + 40FT E C/L INT MKD (BM)	BL 2020A
BASELINE (1965)	2472.499	CSBM MON 4IN UP 38FT S C/L AVE M + 585FT W 35TH ST E MKD (BM 121-7 1961) 2IN IP MKR 3FT UP 2FT N	BL 2021A
BASELINE (1965)	2474.780	L+BN CONC IRRIG STANDPIPE 30FT N C/L AVE M + 30FT W C/L FUT 35TH ST E MKD (BM)	BL 2022A
BASELINE (1965)	2473.525	CSBM MON 4IN UP ON SE COR AVE M + 40TH ST E 38FT S + 34FT E C/L INT MKD (BM 121-8 1961) 2IN IP MKR 3FT UP 2FT N	BL 2023A
BASELINE (1965)	2473.543	L+BN CONC OF 4FT STANDPIPE ON NE COR AVE M + 40TH ST E 30FT N + 28FT E C/L INT MKD (BM)	BL 2024A
BASELINE (1965)	2473.616	CSBM MON 4IN UP ON SW COR AVE M + FUT 45TH ST E 37FT S + 90FT W C/L INT MKD (BM 121-9 1961) 2IN IP MKR 3FT UP 2FT N	BL 2025A
BASELINE (1965)	2472.726	CS MON IN WELL 10IN DN @ C/L INT AVE M + FUT 45TH ST E MKD (1/4 COR 33 4 T6N T7N R11W)	BL 2026A
BASELINE (1965)	2476.739	CS MON 30IN DN IN WELL @ C/L INT AVE M + 50TH ST E MKD (SEC COR 3 4 33 34 T6N T7N R11W)	BL 2027A

QUAD-YEAR	ELEV	DESCRIPTION (INCLUDE QUAD AND YEAR IN DESCRIPTION)	BM NUMBER
BASELINE (1965)	2480.094	CSBM MON 6IN UP ON SE COR AVE M + 50TH ST E 95FT S + 36FT E C/L INT MKD (BM 120-2 1961) 2IN IP MKR 3FT UP 2FT W	BL 2028A
BASELINE (1965)	2483.416	CSBM MON 4IN UP 32FT N C/L AVE M + 450FT W 55TH ST E MKD (BM 121-10 1961) 2IN IP MKR 3FT UP 2FT W	BL 2029A
BASELINE (1965)	2487.225	CSBM MON 4IN UP @ NW COR FUT AVE M + 60TH ST E 30FT N + 42FT W C/L INT MKD (BM 121-11 1961) 2IN IP MKR 3FT UP 2FT S	BL 2030A
BASELINE (1965)	2484.744	CS MON FLUSH @ FUT C/L INT AVE M + 65TH ST E MKD (1/4 COR 35 2 T6N T7N R11W)	BL 2031A
BASELINE (1965)	2496.488	CS MON @ C/L INT FUT AVE M + 75TH ST E MKD (1/4 COR 36 1 T6N T7N R11W)	BL 2033
BASELINE (1965)	2499.424	RDBM MON IN WELL 8IN DN ON NW COR FUT AVE M + 80TH ST E 160FT N + 23FT W C/L INT BET PP 1185566E + DEADMAN 2IN IP MKR 3FT UP 2FT W	BL 2034
BASELINE (1965)	2514.861	CS MON 14IN DN @ C/L INT FUT AVE M + 85TH ST E MKD (1/4 COR 31 6 T6N T7N R10W) 2IN IP MKR 3FT UP 2FT E	BL 2035
BASELINE (1965)	2666.035	RDBM TAG CONC COLLAR FIRE HYD @ SE COR AVE M + FUT 75TH ST W 28FT S + 40FT E C/L INT	BL 2057
BASELINE (1965)	2706.638	USC+GS MON IN SE LEG EDISON TOWER 62-3 50FT N C/L AVE M + 800FT E 80TH ST W MKD (A 1045 1960)	BL 2058
BASELINE (1965)	2721.725	RDBM MON IN WELL 8IN DN @ NW COR FUT AVE M + 80TH ST W 20FT N + 15FT W C/L INT 2IN IP MKR 3FT UP 2FT W	BL 2059
BASELINE (1965)	2864.391	CS MON 12IN DN @ FUT C/L INT AVE M + 85TH ST W MKD (1/4 SEC COR 32 5 T6N T7N R13W)	BL 2060
BASELINE (1965)	2989.442	USC+GS MON 4IN UP @ NW COR FUT AVE M + 90TH ST W 5FT N + 11FT W APPROX C/L INT MKD (Z 1044 1960)	BL 2061
BASELINE (1965)	2756.738	CS MON 12IN DN @ FUT C/L INT AVE L-8 + 90TH ST W MKD (1/4 COR 31 32 R13W T7N)	BL 2062
BASELINE (1965)	2702.222	USC+GS MON 4IN UP 20FT S C/L AVE L (DIRT RD) + 0.4MI W 90TH ST W NR FUT 94TH ST W MKD (X 1044 1960)	BL 2063A
BASELINE (1965)	2710.840	CS MON 24IN DN @ FUT C/L INT AVE L + 95TH ST W MKD (1/4 COR 30 31 T7N R13W)	BL 2064A
BASELINE (1965)	2761.762	CS MON 24IN DN @ FUT C/L INT AVE L + 100TH ST W MKD (SEC COR 25 30 36 31 T7N R13W R14W)	BL 2065
LANCASTR (1968)	2372.156	RDBM TAG E CB FRONT OF WATER TANKS 40FT E C/L 50TH ST W + 0.3MI N AVE K	BL 2079
LANCASTR (1968)	2349.677	2IN IP + CS TAG 3IN UP ON NW COR 50TH ST W + AVE J 60FT N + 60FT W C/L INT	BL 2080
LANCASTR (1968)	2352.759	USC+GS MON 3IN UP ON NE COR 60TH ST W + AVE G 72FT N + 49FT E C/L INT MKD (W 1154 1961)	BL 2081
LANCASTR (1968)	2342.821	CSBM MON 4IN UP 42FT S C/L AVE I + 0.5MI W 50TH ST W MKD (BM 102-11B 1962) 2IN IP MKR 3FT UP 2FT N	BL 2082

QUAD-YEAR	ELEV	D E S C R I P T I O N (INCLUDE QUAD AND YEAR IN DESCRIPTION)	BM	NUMBER
LANCASTR (1968)	2346.628	CSBM MON E HDWL DRIVE TO MIRA LOMA FACILITY 30FT S C/L AVE I + 1200FT E 60TH ST W MKD (BM 102-11A 1962)	BL	2083
LANCASTR (1968)	2362.789	CS MON IN WELL 10IN DN ON C/L 70TH ST W 33FT S C/L AVE I MKD (SEC COR 9 10 15 16 R13W T7N)	BL	2084
LANCASTR (1968)	2357.696	CS MON IN WELL 18IN DN @ C/L INT 70TH ST W + FUT AVE I-8 MKD (1/4 COR 16 15 R13W T7N)	BL	2085
LANCASTR (1968)	2356.064	CS MON IN WELL 18IN DN @ C/L INT 70TH ST W + AVE J MKD (SEC COR 15 16 21 22 R13W T7N)	BL	2086
LANCASTR (1968)	2361.873	CS MON IN WELL 16IN DN @ C/L INT 70TH ST W + FUT AVE J-8 MKD (1/4 COR 21 22 R13W T7N)	BL	2087
LANCASTR (1968)	2399.654	CS MON IN WELL 20IN DN @ C/L INT 70TH ST W + FUT AVE K-8 MKD (1/4 COR 27 28 R13W T7N)	BL	2088
LANCASTR (1968)	2439.172	CS MON IN WELL 20IN DN @ C/L INT 70TH ST W + AVE L MKD (SEC COR 33 34 27 28 R13W T7N)	BL	2089
LANCASTR (1968)	2511.267	CS MON IN WELL 20IN DN @ C/L INT 70TH ST W + FUT AVE L-8 MKD (1/4 COR 33 34 R13W T7N)	BL	2090
LANCASTR (1968)	2436.081	CS MON IN WELL 14IN DN @ C/L INT AVE I + 95TH ST W MKD (1/4 COR 7 18 R13W T7N)	BL	2091
LANCASTR (1968)	2426.805	CSBM MON 6IN UP ON SW COR 90TH ST W + AVE G 25FT S + 25FT W C/L INT MKD (BM 119-16 1961)	BL	2094
LANCASTR (1968)	2420.367	L+T CONC STANDPIPE SE COR 90TH ST W + AVE F-8 32FT S + 60FT E C/L INT MKD (BM)	BL	2095
LANCASTR (1968)	2415.368	CS MON IN WELL 18IN DN @ C/L INT 90TH ST W + AVE F-8 MKD (1/4 COR 31 32 T8N R13W)	BL	2096
LANCASTR (1968)	2431.189	CS MON IN WELL 18IN DN @ C/L INT 90TH ST W + AVE E MKD (SEC COR 19 20 29 30 T8N R13W)	BL	2097
LANCASTR (1968)	2437.052	2IN IP 6IN DN ON SW COR 90TH ST W + AVE D-8 50FT S + 50FT W C/L INT	BL	2098
LANCASTR (1968)	2443.784	USC+GS MON FLUSH ON SW COR 90TH ST W + AVE C 80FT W + 27FT S C/L INT MKD (LITTLE BUTTE 1932)	BL	2099
LANCASTR (1968)	2440.782	USGS MON 3IN UP @ NE COR 90TH ST W + AVE B 25FT N + 25FT E C/L INT MKD (I TWN 1963)	BL	2100
LANCASTR (1968)	2427.956	CS MON 14IN DN @ C/L INT AVE B + FUT 85TH ST W MKD (1/4 COR 5 8 R13W T8N)	BL	2101
LANCASTR (1968)	2407.955	CS MON 12IN DN @ C/L INT AVE B + FUT 75TH ST W MKD (1/4 COR 4 9 R13W T8N)	BL	2102
LANCASTR (1968)	2399.189	CSBM MON 6IN UP ON SW COR AVE B + 70TH ST W 107FT S + 25FT W C/L INT MKD (BM 119-2 1961)	BL	2103
LANCASTR (1968)	2382.796	USC+GS MON FLUSH ON SE COR 60TH ST W + FUT AVE C 170FT S + 40FT E C/L INT MKD (P 1154 1961)	BL	2104
LANCASTR (1968)	2360.188	USC+GS MON 4IN UP ON SE COR 60TH ST W + FUT AVE E 25FT S + 40FT E C/L INT MKD (A 1154 1961)	BL	2105
LANCASTR (1968)	2353.143	CS MON 6IN UP ON SE COR 60TH ST W + FUT AVE F-8 40FT S + 40FT E C/L INT MKD (BM 103-12A 1962)	BL	2106
LANCASTR (1968)	2357.659	USC+GS MON 4IN UP ON NE COR 60TH ST W + AVE H 40FT N + 25FT E C/L INT MKD (V 1153 1961)	BL	2107

QUAD-YEAR	ELEV	DESCRIPTION (INCLUDE QUAD AND YEAR IN DESCRIPTION)	BM NUMBER
LANCASTR (1968)	2356.659	CS MON IN WELL 12IN DN @ C/L INT 60TH ST W + AVE H MKD (SEC COR 2 3 10 11 R13W T7N)	BL 2108
LANCASTR (1968)	2468.514	CS MON IN WELL @ C/L INT AVE K + 90TH ST W MKD (SEC COR 19 20 29 30 R13W T7N)	BL 2111
LANCASTR (1968)	2583.339	CS MON IN WELL 8IN DN @ C/L INT AVE K + FUT 100TH ST W MKD (SEC COR 24 25 19 30 R13W R14W T7N)	BL 2112
LANCASTR (1968)	2530.754	CS MON 12IN DN @ C/L INT 100TH ST W + AVE J-8 MKD (1/4 COR 19 24 R13W R14W T7N) 2IN IP MKR 3FT UP 3FT N	BL 2113
LANCASTR (1968)	2402.348	CSBM MON IN SIDE OF RESERVOIR @ NW COR AVE D + 70TH ST W 110FT N + 30FT W C/L INT MKD (BM 119-6 1961)	BL 2129
BASELINE (1965)	2486.343	CS MON IN WELL @ C/L INT 110TH ST W + AVE D-8 MKD (1/4 COR 23 24 R14W T8N)	BL 2130
BASELINE (1965)	2488.933	CSBM MON 72FT S + 32FT E C/L INT AVE D-8 + 110TH ST W MKD (BM 119-42 1961)	BL 2131
BASELINE (1965)	2481.336	CS MON (NE EDGE) IN WELL 18IN DN @ C/L INT 110TH ST W + AVE E MKD (SEC COR 23 24 25 26 R14W T8N)	BL 2132
BASELINE (1965)	2485.210	CSBM MON 6IN UP 117FT S + 30FT W C/L INT 110TH ST W + FUT AVE E MKD (BM 119-43 1961)	BL 2133
BASELINE (1965)	2494.208	CS MON IN WELL 18IN DN @ C/L INT 110TH ST W + FUT AVE E-8 30FT E PP 1222609E MKD (1/4 COR 25 26 R14W T8N)	BL 2134
BASELINE (1965)	2496.326	CSBM MON 6IN UP 110FT S + 30FT W C/L INT 110TH ST W + AVE E-8 110FT S PP 1222609E MKD (BM 119-44 1961)	BL 2135
BASELINE (1965)	2513.327	CS MON (NE EDGE) IN WELL 18IN DN @ C/L INT 110TH ST W + AVE F 25FT S + 30FT E PP 1222596E MKD (SEC COR 26 25 35 36 R14W T8N)	BL 2136
BASELINE (1965)	2516.157	CSBM MON 6IN UP 260FT S + 35FT W C/L INT 110TH ST W + FUT AVE F MKD (BM 119-45 1961)	BL 2137
BASELINE (1965)	2514.840	CS TRI STA MON 8IN UP 238FT S + 38FT W C/L INT AVE F + 110TH ST W MKD (DEL SUR G-1 ECC 1 1964)	BL 2138A
BASELINE (1965)	2487.868	CS MON (N EDGE) IN WELL 16IN DN @ C/L INT 110TH ST W + AVE F-8 MKD (1/4 COR 35 36 R14W T8N)	BL 2139
BASELINE (1965)	2490.818	CSBM MON 6IN UP 240FT S + 30FT W C/L INT 110TH ST W + AVE F-8 92FT N PP 1222581E MKD (BM 119-46 1961)	BL 2140
BASELINE (1965)	2493.045	CS MON (N EDGE) IN WELL 12IN DN @ C/L INT 110TH ST W + AVE G MKD (SEC COR 35 36 1 2 R14W T7N T8N)	BL 2141
BASELINE (1965)	2496.752	CSBM MON 6IN UP 145FT S + 30FT W C/L INT 110TH ST W + AVE G MKD (BM 119-20 1961)	BL 2142
BASELINE (1965)	2494.393	CS MON (W EDGE) IN WELL 12IN DN @ C/L INT 110TH ST W + AVE G-8 MKD (1/4 COR 1 2 R14W T7N)	BL 2143
BASELINE (1965)	2499.049	CSBM MON 35FT W C/L 110TH ST W + 365FT S AVE G-8 MKD (BM 119-21 1961)	BL 2144

✓

QUAD-YEAR	ELEV	DESCRIPTION (INCLUDE QUAD AND YEAR IN DESCRIPTION)	BM NUMBER
BASELINE (1965)	2494.642	CS MON (E EDGE) IN WELL 24IN DN @ C/L INT 110TH ST W + AVE H MKD (SEC COR 1 2 11 12 T7N R14W)	BL 2145
BASELINE (1965)	2497.882	CSBM MON 160FT S + 30FT W C/L INT 110TH ST W + AVE H MKD (BM 119-22 1961)	BL 2146
BASELINE (1965)	2500.044	CS MON (E EDGE) IN WELL 12IN DN @ C/L INT 110TH ST W + AVE H-8 MKD (1/4 COR 11 12 T7N R14W)	BL 2147
BASELINE (1965)	2501.568	CSBM MON 30FT E C/L 110TH ST W 390FT S AVE H-8 MKD (BM 119-23 1961)	BL 2148
BASELINE (1965)	2499.969	CS MON (W EDGE) IN WELL @ C/L INT 110TH ST W + AVE I-8 MKD (1/4 COR 13 14 T7N R14W)	BL 2149
BASELINE (1965)	2505.583	CSBM MON 6IN UP 30FT W C/L 110TH ST W + 260FT S AVE I-8 174FT SW TP 49/30 MKD (BM 119-24 1961)	BL 2150
BASELINE (1965)	2535.556	USC+GS TRI STA MON FLUSH ON SW COR AVE J + 110TH ST W 45FT W + 40FT S C/L INT MKD (SUR 1932)	BL 2152
BASELINE (1965)	2581.374	CS MON (N EDGE) IN WELL @ C/L INT 110TH ST W + AVE J-8 (DIRT RD TO W) MKD (1/4 COR 23 24 R14W T7N)	BL 2154
BASELINE (1965)	2674.633	CS MON (E EDGE) IN WELL @ C/L INT AVE K + 110TH ST W MKD (SEC COR 23 24 26 25 T7N R14W)	BL 2156
BASELINE (1965)	2681.649	CSBM MON 6IN UP ON SW COR AVE K + 110TH ST W 101FT S + 27FT W C/L INT MKD (BM 119-27 1961)	BL 2157
BASELINE (1965)	2342.444	L+T S END GAS PUMP ISL @ NE COR 90TH ST E + AVE E 75FT N + 80FT E C/L INT	BL 2165A
BASELINE (1965)	2348.056	CS MON FLUSH ON SW COR 90TH ST E + AVE E-8 60FT S + 27FT W C/L INT MKD (BM 116-7 1961)	BL 2166A
BASELINE (1965)	2384.851	CS MON IN WELL 8IN DN @ C/L INT 90TH ST E + AVE G-8 MKD (1/4 COR 5 6 R10W T7N)	BL 2167A
BASELINE (1965)	2402.644	CS MON IN WELL 9IN DN @ C/L INT 90TH ST E + AVE H-8 MKD (1/4 COR 7 8 T7N R10W)	BL 2168A
LANCASTR (1968)	2354.945	L+BN 3FT CONC BASE OF VENT PIPE 140FT E + 38FT N C/L INT AVE F + 85TH ST E	BL 2170
LANCASTR (1968)	2351.836	L+BN SW COR CONC BASE OF PUMP 385FT W + 85FT N C/L INT AVE F + 85TH ST E	BL 2171
LANCASTR (1968)	2339.884	L+T CONC WALK TO HSE @ NW COR 65TH ST E + AVE F 90FT N + 75FT W C/L INT 4FT N OF WOODEN PORCH	BL 2172
LANCASTR (1968)	2323.640	USC+GS MON 6IN UP @ SW COR AVE E + 60TH ST E 20FT S + 35FT W C/L INT MKD (S 1155 1961)	BL 2173
LANCASTR (1968)	2318.716	CSBM MON ON NW COR AVE E + 50TH ST E 30FT N + 49FT W C/L INT MKD (BM 106-130 1959)	BL 2174
LANCASTR (1968)	2317.176	CSBM MON 27FT S C/L AVE E + 1.0MI W 50TH ST E 3FT S PP 1273709E 29FT W OF NE FENCE COR MKD (BM 106-132 1959)	BL 2175
LANCASTR (1968)	2312.435	CSBM MON 6IN UP @ SE COR AVE E + 30TH ST E 32FT E + 27FT S C/L INT MKD (BM 106-134 1959)	BL 2176
LANCASTR (1968)	2344.514	L+T N CB AVE G 1FT E BCR @ NE COR AVE G + 30TH ST E 77FT E + 42FT N C/L INT	BL 2177

QUAD-YEAR	ELEV	DESCRIPTION (INCLUDE QUAD AND YEAR IN DESCRIPTION)	BM NUMBER
LANCASTR (1968)	2378.854	2IN IP (SW EDGE) 6IN DN @ NW COR AVE I + 30TH ST E 53FT W + 47FT N C/L INT	BL 2178
LANCASTR (1968)	2382.780	CSBM MON 6IN UP 58FT S C/L AVE I ON C/L PROD 35TH ST E MKD (BM 107-37 1961)	BL 2179
LANCASTR (1968)	2384.749	CSBM MON 6IN UP 12FT E + 25FT S C/L INT AVE I + 45TH ST E MKD (BM 107-35 1961)	BL 2180
LANCASTR (1968)	2389.460	USC+GS MON @ SE COR AVE I + 50TH ST E 94FT E + 27FT S C/L INT 3FT S PP 1122574E MKD (G 1154 1951)	BL 2181
LANCASTR (1968)	2393.417	CSBM MON 145FT W + 23FT N C/L INT AVE I + 55TH ST E MKD (BM 107-33 1961)	BL 2182
LANCASTR (1968)	2399.119	CSBM MON 6IN UP @ NW COR AVE I + 60TH ST E 70FT N + 27FT W C/L INT 3FT W PP 991726E MKD (BM 107-32 1961)	BL 2183
LANCASTR (1968)	2314.493	CSBM MON @ SW COR 25TH ST E (DIRT RD) + AVE E 5FT W + 65FT S C/L INT MKD (BM 106-135 1959)	BL 2184
LANCASTR (1968)	2304.837	CSBM MON 6IN UP 28FT E + 36FT S C/L INT AVE E + FUT 15TH ST E 5FT S PP 1270606E MKD (BM 106- 137 1959)	BL 2185
LANCASTR (1968)	2303.042	USC+GS MON 42FT S + 50FT E C/L INT AVE E + 10TH ST E MKD (F 1154 1961)	BL 2186
LANCASTR (1968)	2296.616	USC+GS MON 4IN UP @ NW COR AVE E + DIVISION ST 45FT N + 20FT W C/L INT MKD (E 1154 1961)	BL 2187
LANCASTR (1968)	2297.455	CSBM MON 6IN UP 90FT W + 35FT S C/L INT AVE E + 5TH ST W 4FT S PP 1270563E MKD (BM 106-141 1959)	BL 2188
BASELINE (1965)	2488.888	CS MON (S EDGE) IN WELL 8IN DN @ C/L INT 90TH ST E + AVE K-8 MKD (1/4 COR 29 30 R10W T7N)	BL 2189A
BASELINE (1965)	2511.988	CS MON IN WELL 8IN DN @ C/L INT 90TH ST E + FUT AVE L-8 MKD (1/4 SEC COR 31 32 R10W T7N)	BL 2190A
LANCASTR (1968)	2476.875	L+BN S END CONC PUMP ISL OF GAS STA @ NW COR SIERRA HWY + AVE L 105FT N + 80FT W C/L INT MKD (BM)	BL 2191
LANCASTR (1968)	2376.336	RDBM TAG E CB 1FT N BCR @ NE COR SIERRA HWY + AVE J 75FT N + 40FT E C/L INT	BL 2192
LANCASTR (1968)	2301.964	USC+GS REF MON 7IN UP 188FT W C/L SIERRA HWY + 2175FT N AVE F MKD (OBAN NO 1 1941)	BL 2193
LANCASTR (1968)	2306.802	CS MON IN WELL 8IN DN @ C/L INT AVE D + FUT 15TH ST W MKD (1/4 COR 16 21 R12W T8N)	BL 2194
LANCASTR (1968)	2336.082	2IN IP @ SW COR AVE H + DIVISION ST 50FT S + 50FT W C/L INT	BL 2195
LANCASTR (1968)	2375.007	L+T CONC WALK 3FT N + 2FT E OF SE COR BLDG 2201 AVE I 90FT N C/L + 1270FT W 25TH ST E	BL 2196
LANCASTR (1968)	2350.421	CS MON IN WELL 14IN DN @ C/L INT AVE G + FUT 55TH ST E MKD (1/4 COR 3 34 R12W T7N T8N)	BL 2197
LANCASTR (1968)	2347.619	CS MON IN WELL 12IN DN @ C/L INT AVE G + 50TH ST E MKD (SEC COR 4 3 33 34 R11W T7N T8N)	BL 2198

QUAD-YEAR	ELEV	DESCRIPTION (INCLUDE QUAD AND YEAR IN DESCRIPTION)	BM NUMBER
LANCASTR (1968)	2349.030	USC+GS MON 2IN UP @ SW COR AVE G + 50TH ST E 25FT W + 35FT S C/L INT MKD (J 1154 1961)	BL 2199
LANCASTR (1968)	2346.209	CS MON 18IN DN @ C/L INT AVE G + FUT 40TH ST E MKD (SEC COR 33 32 5 4 R11W T7N T8N)	BL 2200
LANCASTR (1968)	2318.707	CS MON IN WELL 8IN DN @ C/L INT AVE I + 25TH ST W MKD (1/4 COR 17 8 R12W T7N)	BL 2202
LANCASTR (1968)	2322.722	CS MON IN WELL @ C/L INT AVE I + 20TH ST W MKD (SEC COR 8 9 17 16 R12W T7N)	BL 2203
LANCASTR (1968)	2325.757	CSBM MON FLUSH IN PARKWAY @ NE COR AVE I + 15TH ST W 51FT N + 44FT E C/L INT MKD (BM 102-2 1957)	BL 2204
LANCASTR (1968)	2330.466	CS MON IN WELL @ C/L INT AVE I + 10TH ST W MKD (SEC COR 9 10 15 16 T7N R12W)	BL 2205
LANCASTR (1968)	2446.884	CS MON IN WELL 8IN DN @ C/L INT AVE L + 20TH ST W MKD (SEC COR 29 28 32 33 R12W T7N)	BL 2209
LANCASTR (1968)	2448.566	RDBM TAG W CB 1FT N BCR @ SW COR AVE L + 20TH ST W 40FT W + 76FT S C/L INT	BL 2210
LANCASTR (1968)	2379.842	RDBM TAG S CB 2FT W BCR @ SW COR LANCASTER BLVD + 10TH ST E 78FT W + 22FT S C/L INT	BL 2211
LANCASTR (1968)	2424.006	L+SQ SPK N CB @ NE COR AVE K + 4TH ST E 60FT E + 38FT N C/L INT MKD (AV 199)	BL 2212
LANCASTR (1968)	2423.265	CS TAG S CB AVE K 5FT E OF END CB 42FT S + 85FT E C/L INT AVE K + DIVISION ST 2FT N TP K10680Y	BL 2213
LANCASTR (1968)	2356.478	L+T E CB DIVISION ST 28FT E C/L ON C/L PROD LANCASTER BLVD FROM THE W 5FT N OF DRWY TO HIGH SCHOOL	BL 2214
LANCASTR (1968)	2361.894	L+T S CB 5FT W BCR @ SW COR DIVISION ST + MILLING ST 72FT W + 30FT S C/L INT MKD (BM)	BL 2215
LANCASTR (1968)	2362.116	L+T S CB 6FT E BCR @ E EDGE C B @ SE COR LANCASTER BLVD + DIVISION ST 30FT S + 61FT E C/L INT MKD (BM)	BL 2216
LANCASTR (1968)	2410.551	L+BN W CB 8FT N BCR @ NW COR FIG AVE + AVE K SERVICE RD 50FT N + 15FT W C/L INT	BL 2217
LANCASTR (1968)	2406.780	L+T N CB 7FT W OF C B @ NE COR 10TH ST W + AVE K 109FT E + 40FT N C/L INT	BL 2218
LANCASTR (1968)	2384.566	L+T S CB SERVICE RD 54FT N C/L AVE K + 135FT E C/L 22N OUT	BL 2220
LANCASTR (1968)	2387.202	CS MON (S EDGE) IN WELL 18IN DN @ C/L INT AVE K + 25TH ST W MKD (1/4 COR 20 29 T7N R12W)	BL 2221
LANCASTR (1968)	2385.199	2IN IP CONC PLUG + CS TAG 4IN UP @ SW COR AVE K + 40TH ST W 50FT W + 50FT S C/L INT	BL 2222
LANCASTR (1968)	2378.358	CS MON (N EDGE) IN WELL 12IN DN @ C/L INT AVE K + 45TH ST W MKD (1/4 COR 24 25 T7N R13W)	BL 2223
LANCASTR (1968)	2314.149	CS MON IN WELL 14IN DN @ C/L INT AVE A + 20TH ST W TO THE N MKD (SEC COR 32 33 4 5 R12W T8N T9N)	BL 2224
LANCASTR (1968)	2314.783	CSBM MON @ SW COR AVE A + 20TH ST W 40FT S + 40FT W C/L INT MKD (BM 117-1 1961)	BL 2225

QUAD-YEAR	ELEV	DESCRIPTION (INCLUDE QUAD AND YEAR IN DESCRIPTION)	BM NUMBER
LANCASTR (1968)	2320.572	CS MON (W EDGE) IN WELL 14IN DN @ C/L INT AVE A + 25TH ST W (PROP) MKD (1/4 COR 32 5 R12W T8N T9N)	BL 2227
LANCASTR (1968)	2324.723	CSBM MON 30FT N C/L AVE A + 0.25MI W OF 25TH ST W (PROP) 30FT W OF POWER LINE MKD (BM 117-3 1961)	BL 2229
LANCASTR (1968)	2328.921	CS MON (E EDGE) IN WELL 14IN DN @ C/L INT AVE A + 30TH ST W MKD (SEC 31 32 6 5 T9N T8N R12W)	BL 2230
LANCASTR (1968)	2329.213	CSBM MON @ SW COR AVE A + 30TH ST W 43FT S + 43FT W C/L INT MKD (BM 117-4 1961)	BL 2231
LANCASTR (1968)	2337.858	CS MON IN WELL 14IN DN @ C/L INT AVE A + 35TH ST W (PROP) MKD (1/4 COR 31 6 T9N T8N R12W)	BL 2232
LANCASTR (1968)	2338.496	L+BM CONC FOOTING 4FT BARBED WIRE FENCE @ ANCHOR POST 40FT N + 10FT W C/L INT AVE A + 35TH ST W (PROP) MKD (BM)	BL 2233
LANCASTR (1968)	2345.292	CS MON (S EDGE) IN WELL 14IN DN @ C/L INT AVE A + 40TH ST W (PROP) MKD (SEC COR 36 31 1 6 T9N T8N R13W R12W)	BL 2234
LANCASTR (1968)	2345.143	CSBM MON 8IN UP @ SW COR AVE A + 40TH ST W (PROP) 71FT W + 40FT S C/L INT MKD (BM 117-6 1961)	BL 2235
LANCASTR (1968)	2352.463	CS MON (S EDGE) IN WELL 14IN DN @ C/L INT AVE A + 45TH ST W (PROP) MKD (1/4 COR 36 1 T9N T8N R13W)	BL 2236
LANCASTR (1968)	2353.144	L+T DRWY TO HSE @ NW COR AVE A + 45TH ST W (PROP) 147FT W + 67FT N C/L INT	BL 2237
LANCASTR (1968)	2358.033	CSBM MON 8IN UP 35FT S C/L AVE A + 0.2MI W 45TH ST W 32FT E PP 955226E MKD (BM 117-7 1961)	BL 2238
LANCASTR (1968)	2362.767	CS MON (E EDGE) IN WELL 14IN DN @ C/L INT AVE A + 50TH ST W MKD (SEC COR 35 36 2 1 T8N T9N R13W)	BL 2239
LANCASTR (1968)	2363.363	CSBM MON 8IN UP @ SW COR AVE A + 50TH ST W 40FT W + 44FT S C/L INT MKD (BM 117-8 1961)	BL 2240
LANCASTR (1968)	2372.044	CS MON (S EDGE) IN WELL 14IN DN @ C/L INT AVE A + 55TH ST W (PROP) MKD (1/4 COR 35 2 R13W T8N T9N)	BL 2241
LANCASTR (1968)	2372.607	CSBM MON 8IN UP @ SW COR AVE A + 55TH ST W (PROP) 30FT S + 50FT W C/L INT MKD (BM 117-9 1961)	BL 2242
LANCASTR (1968)	2380.618	USGS MON 8IN UP @ SW COR AVE A + 60TH ST W 30FT S + 36FT W C/L INT MKD (LINT CORNERS 1929)	BL 2243
LANCASTR (1968)	2381.173	CSBM MON 8IN UP @ SE COR AVE A + 60TH ST W 64FT S + 31FT E C/L INT MKD (BM 117-10A 1961)	BL 2244
LANCASTR (1968)	2380.636	CS MON (S EDGE) IN WELL 14IN DN @ C/L INT 60TH ST W + AVE A-8 MKD (1/4 COR 3 2 T8N R13W)	BL 2245
LANCASTR (1968)	2381.234	2IN IP 6IN UP @ SE COR AVE A-8 + 60TH ST W 50FT S + 50FT E C/L INT	BL 2246
LANCASTR (1968)	2368.820	RDBM TAG E CB ELM AVE @ NE COR ELM AVE + AVE J 4FT N DRWY 17FT E + 84FT N C/L INT	BL 2247

QUAD-YEAR	ELEV	DESCRIPTION (INCLUDE QUAD AND YEAR IN DESCRIPTION)	BM NUMBER
LANCASTR (1968)	2341.710	L+BN N CB SERVICE RD @ SW COR AVE J + 22ND ST W 8FT W BCR 42FT S + 54FT W C/L INT MKD (BM)	BL 2249
LANCASTR (1968)	2340.668	L+BN S CB SERVICE RD 8FT W BCR @ SW COR AVE J + 23RD ST W 47FT W + 71FT S C/L INT	BL 2250
LANCASTR (1968)	2340.183	CS MON (N EDGE) IN WELL 12IN DN @ C/L INT AVE J + 30TH ST W MKD (SEC COR 19 20 17 18 T7N R12W)	BL 2251
LANCASTR (1968)	2341.056	CS MON (N EDGE) IN WELL 12IN DN @ C/L INT AVE J + 35TH ST W (PROP) MKD (1/4 COR 18 19 T7N R12W)	BL 2252
LANCASTR (1968)	2346.992	CS MON (E EDGE) IN WELL 16IN DN @ C/L INT AVE J + 45TH ST W TO N MKD (1/4 COR 13 24 T7N R13W)	BL 2253
LANCASTR (1968)	2344.738	L+T N CB 8FT W BCR @ NW COR LANCASTER BLVD + 10TH ST W 27FT N + 60FT W C/L INT	BL 2255
LANCASTR (1968)	2352.276	L+BN S CB 3FT W BCR @ SW COR KETTERING ST + DIVISION ST 56FT W + 20FT S C/L INT MKD (BM)	BL 2256
LANCASTR (1968)	2351.064	CS TAG N CB 1.3FT W BCR @ NW COR KETTERING ST + REDWOOD AVE 48FT W + 20FT N C/L INT	BL 2257
LANCASTR (1968)	2350.009	L+T E CB 1.0FT S BCR @ SE COR KETTERING ST + TREVOR AVE 53FT S + 20FT E C/L INT	BL 2258
LANCASTR (1968)	2342.069	CS TAG W CB 2FT S BCR @ SW COR SIERRA HWY + JACKMAN ST 37FT S + 30FT W C/L INT	BL 2259
LANCASTR (1968)	2366.735	L+T FIRST STEP HSE 108 NEWGROVE ST @ E EDGE WALK 112FT W + 25FT S C/L INT NEWGROVE ST + DIVISION ST	BL 2260
LANCASTR (1968)	2362.829	CS TAG SE COR CONC SLAB IN FRONT BLDG 44665 74FT S + 34FT W C/L INT NEWGROVE ST TO E + TREVOR AVE	BL 2261
LANCASTR (1968)	2362.050	L+T CONC PORCH @ N SIDE BLDG 44659 @ SW COR YUCCA AVE + NEWGROVE ST 85FT W + 38FT S C/L INT	BL 2262
LANCASTR (1968)	2359.269	1 1/2IN IP CONC PLUG + BOLT @ C/L INT YUCCA AVE + NEWGROVE ST	BL 2263
LANCASTR (1968)	2365.673	L+T W CB 5FT S BCR @ SW COR CEDAR AVE + OLDFIELD ST 39FT S + 18FT W C/L INT	BL 2264
LANCASTR (1968)	2358.322	L+T CTR C B 30FT S C/L MILLING ST ON C/L PROD SPEARMAN AVE FROM THE N	BL 2265
LANCASTR (1968)	2357.885	L+T W CB ISL 25FT N + 26FT E C/L INT YUCCA AVE + MILLING ST MKD (BM)	BL 2266
LANCASTR (1968)	2363.473	L+T 0.8FT S OF N EDGE WALK TO HSE 44544 @ SE COR ELM AVE + OLDFIELD ST 59FT S + 56FT E C/L INT	BL 2267
LANCASTR (1968)	2429.316	L+T CONC APRON @ SW COR BLDG 4358 (GAS STA) @ SE COR AVE L + 45TH ST 51FT E + 58FT S C/L INT	BL 2268
LANCASTR (1968)	2363.044	CSBM MON 30FT N C/L AVE G + 340FT E PROP 65TH ST W MKD (BM 119-47 1961)	BL 2269
LANCASTR (1968)	2362.808	CS MON (S EDGE) IN WELL 18IN DN @ C/L INT AVE G + PROP 65TH ST W MKD (1/4 COR 34 3 R13W T8N T7N)	BL 2270
LANCASTR (1968)	2371.559	CS MON IN WELL 18IN DN @ C/L INT AVE G + 70TH ST W MKD (SEC COR 33 34 4 3 R13W T8N T7N)	BL 2271
LANCASTR (1968)	2374.235	CSBM MON 6IN UP @ NW COR AVE G + 70TH ST W 28FT N + 31FT W C/L INT MKD (BM 119-12 1961)	BL 2272

QUAD-YEAR	ELEV	D E S C R I P T I O N (INCLUDE QUAD AND YEAR IN DESCRIPTION)	BM	NUMBER
LANCASTR (1968)	2384.815	CS MON (S EDGE) IN WELL 14IN DN @ C/L INT 75TH ST W + AVE G MKD (1/4 COR 33 4 R13W T8N T7N)	BL	2273
LANCASTR (1968)	2387.544	CSBM MON 8IN UP 27FT N C/L AVE G + 259FT W OF 75TH ST W MKD (BM 119-13 1961)	BL	2274
LANCASTR (1968)	2398.903	CS MON (S EDGE) IN WELL 16IN DN @ C/L INT 80TH ST W + AVE G MKD (SEC COR 33 32 5 4 T7N T8N R13W)	BL	2275
LANCASTR (1968)	2401.523	CSBM MON @ NW COR 80TH ST W + AVE G 96FT W + 25FT N C/L INT MKD (BM 119-14 1961)	BL	2276
LANCASTR (1968)	2411.463	CS MON (N EDGE) IN WELL 14IN DN @ C/L INT AVE G + 85TH ST W (PROP) MKD (1/4 COR 32 5 T7N T8N R13W)	BL	2277
LANCASTR (1968)	2414.416	CSBM MON 6IN UP 230FT W + 25FT N C/L INT AVE G + 85TH ST W (PROP) MKD (BM 119-15 1961)	BL	2278
LANCASTR (1968)	2437.367	CS MON (N EDGE) IN WELL 28IN DN @ C/L INT PROP 95TH ST W + AVE G MKD (1/4 COR 31 6 T8N T7N R13W)	BL	2279
LANCASTR (1968)	2442.672	CSBM MON 6IN UP 315FT W + 25FT N C/L INT AVE G + PROP 95TH ST W MKD (119-17 1961)	BL	2280
LANCASTR (1968)	2450.163	CS MON (N EDGE) 6IN DN @ C/L INT AVE G + 100TH ST W (PROP) MKD (SEC COR 36 31 1 6 T8N T7N R14W)	BL	2281
LANCASTR (1968)	2451.988	CSBM MON 8IN UP 25FT N + 180FT W C/L INT AVE G + 100TH ST W (PROP) MKD (BM 119-18 1961)	BL	2282
LANCASTR (1968)	2459.996	CS MON (S EDGE) IN WELL 12IN DN @ C/L INT AVE G + 105TH ST W (PROP) MKD (1/4 COR 36 1 R14W T8N T7N)	BL	2283
LANCASTR (1968)	2464.933	CSBM MON 6IN UP 25FT N + 395FT W C/L INT AVE G + 105TH ST W (PROP) 85FT E PP 430227E MKD (BM 119-19 1961)	BL	2284
LANCASTR (1968)	2359.461	CS MON IN WELL 10IN DN @ C/L INT PROP AVE J-8 + 30TH ST W MKD (1/4 COR 19 20 R12W T7N)	BL	2286
LANCASTR (1968)	2301.841	CS MON (W EDGE) IN WELL 24IN DN @ C/L INT AVE F + PROP 10TH ST W MKD (SEC COR 28 27 33 34 T8N R12W)	BL	2287
LANCASTR (1968)	2304.263	RDBM TAG 2FT E OF W EDGE S HDWL 1.06 25FT S C/L AVE F + 472FT W C/L PROP 10TH ST W	BL	2288
LANCASTR (1968)	2304.792	BOLT (W EDGE) IN WELL 12IN DN @ C/L INT AVE F + PROP 15TH ST W	BL	2289
LANCASTR (1968)	2305.792	CSBM MON 8IN UP @ SW COR AVE F + PROP 15TH ST W 42FT W + 40FT S C/L INT MKD (AVA 14)	BL	2290
LANCASTR (1968)	2309.806	CSBM MON 8IN UP @ SW COR AVE F + 20TH ST W 19FT W + 43FT S C/L INT MKD (AVA 13)	BL	2292
LANCASTR (1968)	2313.719	CSBM MON @ SE COR AVE F + 25TH ST W 40FT E + 38FT S C/L INT MKD (AVA 12)	BL	2293
LANCASTR (1968)	2312.624	BOLT IN CONC 17IN DN @ C/L INT AVE F + 25TH ST E	BL	2294
LANCASTR (1968)	2317.744	CS MON 6IN DN @ C/L INT AVE F + 30TH ST W MKD (SEC COR 30 29 31 32 T8N R12W)	BL	2295

QUAD-YEAR	ELEV	DESCRIPTION (INCLUDE QUAD AND YEAR IN DESCRIPTION)	BM NUMBER
LANCASTR (1968)	2322.491	CSBM MON 6IN UP @ SW COR AVE F + 35TH ST W 40FT W + 39FT S C/L INT MKD (AVA 10)	BL 2296
LANCASTR (1968)	2321.882	BOLT IN CONC 18IN DN @ C/L INT AVE F + 35TH ST W	BL 2297
LANCASTR (1968)	2325.079	CS MON (SW COR) IN WELL 8IN DN ON C/L AVE F 0.2MI W 35TH ST W @ NE COR FOX AIRFIELD	BL 2298
LANCASTR (1968)	2326.379	CS MON (N EDGE) IN WELL 18IN DN @ C/L INT AVE F + 40TH ST W MKD (SEC COR 25 36 30 31 R12W R13W T8N)	BL 2299
LANCASTR (1968)	2326.840	CSBM MON @ SW COR AVE F + 40TH ST W 34FT S + 34FT W C/L INT MKD (BM 103-7 1957)	BL 2300
LANCASTR (1968)	2333.021	CSBM MON 8IN UP ON C/L 45TH ST W 40FT S C/L AVE F MKD (AVA 8)	BL 2301
LANCASTR (1968)	2338.491	CSBM MON 40FT S + 40FT W C/L INT AVE F + 50TH ST W 36FT W OF W GATE POST TO FOX AIRFIELD MKD (AVA 7 1959)	BL 2302
LANCASTR (1968)	2339.301	CSBM MON 4IN UP 42FT S + 41FT W C/L INT AVE F + 50TH ST W 37FT W OF W GATE POST TO FOX AIRFIELD MKD (BM 103-9A 1962)	BL 2303
LANCASTR (1968)	2345.621	CSBM MON @ SE COR AVE F + 55TH ST W (PROP) 40FT S + 40FT E C/L INT MKD (AVA 6)	BL 2304
LANCASTR (1968)	2344.704	BOLT IN 2IN IP 15IN DN @ C/L INT AVE F + PROP 55TH ST W	BL 2305
LANCASTR (1968)	2436.578	CS MON IN WELL 8IN DN @ C/L INT 90TH ST W + AVE A-8 MKD (1/4 COR 5 6 T8N R13W)	BL 2315
LANCASTR (1968)	2438.403	L+BN CONC SADDLE OF PIPE @ OLD PUMP HSE ON NE COR 90TH ST W + AVE A-8 40FT N + 53FT E C/L INT MKD (BM)	BL 2316
LANCASTR (1968)	2432.866	CSBM MON 6IN UP ON SE COR AVE A + 90TH ST W 90FT S + 21FT E C/L INT MKD (BM 117-16 1961)	BL 2317
LANCASTR (1968)	2431.296	CS MON IN WELL 8IN DN @ C/L INT AVE A + 90TH ST W MKD (5 6 31 32 T8N T9N R13W)	BL 2318
LANCASTR (1968)	2444.275	CSBM MON 4IN UP ON SE COR AVE A + 95TH ST W 27FT S + 75FT E C/L INT MKD (BM 117-17 1961)	BL 2319
LANCASTR (1968)	2442.754	CS MON IN WELL 14IN DN @ C/L INT AVE A + 95TH ST W MKD (31 6 T8N T9N R13W)	BL 2320
LANCASTR (1968)	2459.383	CSBM MON 6IN UP ON SE COR AVE A + 100TH ST W 28FT S + 100FT E C/L INT MKD (BM 117-18 1961)	BL 2321
LANCASTR (1968)	2458.451	CS MON IN WELL 14IN DN @ C/L INT AVE A + 100TH ST W MKD (36 31 1 6 T8N T9N R13W R14W)	BL 2322
LANCASTR (1968)	2473.184	CSBM MON 6IN UP ON SE COR AVE A + 105TH ST W 28FT S + 252FT E C/L INT MKD (BM 117-19 1961)	BL 2323
LANCASTR (1968)	2472.433	CS MON IN WELL 16IN DN @ C/L INT AVE A + 105TH ST W MKD (36 1 T8N T9N R14W)	BL 2324
BASELINE (1965)	2485.793	CSBM MON 4IN UP ON SE COR AVE A + 110TH ST W 28FT S + 75FT E C/L INT MKD (BM 117-20 1961)	BL 2325
BASELINE (1965)	2484.190	CS MON IN WELL 14IN DN @ C/L INT AVE A + 110TH ST W MKD (35 36 2 1 R14W T8N T9N)	BL 2326

QUAD-YEAR	ELEV	DESCRIPTION (INCLUDE QUAD AND YEAR IN DESCRIPTION)	BM NUMBER
BASELINE (1965)	2487.093	CSBM MON 6IN UP 250FT N + 30FT W C/L INT AVE A-8 + 110TH ST W MKD (BM 119-36 1961)	BL 2327A
BASELINE (1965)	2486.027	CS MON IN WELL 14IN DN @ C/L INT AVE A-8 + 110TH ST W MKD (1/4 COR 2 1 T8N R14W)	BL 2328
BASELINE (1965)	2482.898	CS MON IN WELL 30IN DN @ C/L INT AVE B + 110TH ST W MKD (2 1 11 12 R14W T8N)	BL 2329A
BASELINE (1965)	2485.169	CSBM MON 4IN UP DN NE COR AVE B + 110TH ST W 28FT N + 55FT E C/L INT MKD (BM 119-37 1961)	BL 2330A
BASELINE (1965)	2484.226	CS MON IN WELL 20IN DN @ C/L INT 110TH ST W + FUT AVE B-8 MKD (1/4 COR 11 12 R14W T8N)	BL 2331A
BASELINE (1965)	2486.532	CSBM MON 4IN UP @ SE COR 110TH ST W + FUT AVE B-8 125FT S + 28FT E C/L INT MKD (BM 119-38 1961)	BL 2332A
BASELINE (1965)	2483.473	CS MON IN WELL 24IN DN @ C/L INT 110TH ST W + AVE C MKD (11 12 13 14 R14W T8N)	BL 2333
BASELINE (1965)	2486.193	CSBM MON 4IN UP @ SE COR 110TH ST W + AVE C 85FT S + 27FT E C/L INT MKD (BM 119-39 1961)	BL 2334
BASELINE (1965)	2482.694	CS MON IN WELL 14IN DN @ C/L INT 110TH ST W + AVE C-8 MKD (1/4 COR 14 13 T8N R14W)	BL 2335A
BASELINE (1965)	2485.652	CSBM MON 6IN UP DN SW COR 110TH ST W + AVE C-8 95FT S + 25FT W C/L INT MKD (BM 119-40 1961)	BL 2336A
LANCASTR (1968)	2457.520	CS MON IN WELL 2IN DN @ C/L INT 30TH ST E + FUT AVE L-8 MKD (1/4 COR 31 32 T7N R11W)	BL 2361
LANCASTR (1968)	2444.457	CS MON IN WELL 12IN DN @ C/L INT 30TH ST E + FUT AVE L MKD (30 29 31 32 T7N R11W)	BL 2362
LANCASTR (1968)	2446.068	L+BN CONC FOOTING WATER TANK ON NW COR 30TH ST E + FUT AVE L 35FT N + 30FT W C/L INT MKD (BM)	BL 2363
LANCASTR (1968)	2432.855	CS MON IN WELL 6IN DN @ C/L INT 30TH ST E + FUT AVE K-8 MKD (1/4 SEC COR 30 29 T7N R11W)	BL 2364
LANCASTR (1968)	2419.954	CS MON IN WELL 24IN DN @ C/L INT 30TH ST E + AVE K MKD (SEC COR 19 20 29 30 T7N R11W)	BL 2365
LANCASTR (1968)	2420.230	2IN IP 4IN UP DN NW COR 30TH ST E + AVE K 50FT N + 50FT W C/L INT	BL 2366
LANCASTR (1968)	2422.133	CS MON IN WELL 12IN DN @ C/L INT AVE K + FUT 35TH ST E MKD (1/4 COR 20 29 R11W T7N)	BL 2367
LANCASTR (1968)	2428.005	CS MON IN WELL 18IN DN @ C/L INT AVE K + 40TH ST E MKD (20 21 29 28 R11W T7N)	BL 2368
LANCASTR (1968)	2431.723	CS MON IN WELL 14IN DN @ C/L INT AVE K + FUT 45TH ST E MKD (1/4 COR 21 28 R11W T7N)	BL 2369
LANCASTR (1968)	2435.725	CS MON IN WELL 12IN DN @ C/L INT AVE K + 50TH ST E MKD (SEC COR 21 22 28 27 R11W T7N)	BL 2370
LANCASTR (1968)	2436.610	CSBM MON 6IN UP DN NE COR AVE K + 50TH ST E 88FT N + 37FT E C/L INT MKD (BM 120-6 1961)	BL 2371
LANCASTR (1968)	2436.394	2IN IP + SPK IN WELL 18IN DN @ C/L INT AVE K + 55TH ST E	BL 2372
LANCASTR (1968)	2442.276	CS MON IN WELL 18IN DN @ C/L INT AVE K + 60TH ST E MKD (SEC COR 22 23 26 27 R11W T7N)	BL 2373

QUAD-YEAR	ELEV	DESCRIPTION (INCLUDE QUAD AND YEAR IN DESCRIPTION)	BM NUMBER
LANCASTR (1968)	2444.382	L+BN CONC SLAB OF ELECT PANEL ON NW COR AVE K + FUT 65TH ST E 75FT N + 90FT W C/L INT MKD (BM)	BL 2374
LANCASTR (1968)	2445.795	L+BN CONC FOUNDATION ON NE COR AVE K + 70TH ST E 75FT N + 75FT E C/L INT MKD (BM)	BL 2375
LANCASTR (1968)	2433.614	L+BN CONC MOTOR MOUNT ON NW COR 70TH ST E + FUT AVE J-8 75FT N + 120FT W C/L INT MKD (BM)	BL 2376
LANCASTR (1968)	2419.625	RDBM MON IN WELL 8IN DN ON SW COR AVE J + 70TH ST E 40FT S + 55FT W C/L INT 2IN IP MKR 3FT UP 2FT S	BL 2377
LANCASTR (1968)	2409.667	2IN IP 14IN DN @ C/L INT 70TH ST E + FUT AVE I-8	BL 2378
LANCASTR (1968)	2328.242	CS MON 12IN DN @ C/L INT FUT AVE I-8 + FUT 40TH ST W MKD (1/4 COR 13 18 R12W R13W T7N)	BL 2445
LANCASTR (1968)	2327.012	CSBM MON 6IN UP ON NE COR FUT AVE E-8 + 50TH ST E 82FT N + 35FT E C/L INT MKD (BM 120-17 1961)	BL 2446
LANCASTR (1968)	2334.056	USC+GS MON 4IN UP ON NE COR 50TH ST E + AVE F 55FT E + 20FT N C/L INT MKD (K 1154 1961)	BL 2448
LANCASTR (1968)	2340.669	CSBM MON IN CONC 3IN UP ON NW COR FUT AVE F-8 + 50TH ST E 260FT N + 30FT W C/L INT MKD (BM 120- 15 1961)	BL 2450
LANCASTR (1968)	2339.747	CS MON (S EDGE) IN WELL 24IN DN @ C/L INT FUT AVE F-8 + 50TH ST E MKD (1/4 COR 33 34 R11W T8N)	BL 2451
LANCASTR (1968)	2317.484	CSBM MON 6IN UP @ SE COR AVE F + 30TH ST W 40FT E + 39FT S C/L INT MKD (AVA 11)	BL 2452
LANCASTR (1968)	2318.165	PM NE RIM 2IN IP WITH CONC PLUG + CS TAG 3IN UP ON SE COR 30TH ST W + AVE F-8 50FT S + 50FT E C/L INT	BL 2454
LANCASTR (1968)	2317.695	PM N RIM 2IN IP WITH CONC PLUG + CS TAG 3IN UP ON NW COR 30TH ST W + FUT AVE G 50FT N + 50FT W C/L INT	BL 2455
LANCASTR (1968)	2314.584	CS MON IN WELL 12IN DN @ C/L INT 30TH ST W + AVE H MKD (SEC COR 5 6 7 8 R12W T7N)	BL 2459
LANCASTR (1968)	2315.773	PM NW RIM 2IN IP WITH CONC PLUG + CS TAG 3IN UP ON SE COR 30TH ST W + AVE H 63FT S + 63FT E C/L INT	BL 2460
LANCASTR (1968)	2314.027	PM E RIM 2IN IP WITH CONC PLUG + CS TAG 3IN UP ON NW COR 30TH ST W + FUT AVE H-8 50FT N + 50FT W C/L INT	BL 2461
LANCASTR (1968)	2314.294	PM S RIM 2IN IP WITH CONC PLUG + CS TAG FLUSH ON SE COR 30TH ST W + FUT AVE H-8 50FT S + 50FT E C/L INT	BL 2462
LANCASTR (1968)	2318.616	L+T W END S HDWL BRIDGE B 1091 20FT S C/L AVE I + 100FT E C/L 30TH ST W	BL 2463
LANCASTR (1968)	2367.579	CSBM MON 6IN UP 22FT E C/L 70TH ST W + 200FT S C/L FUT AVE F-8 MKD (BM 119-11 1961) 2IN IP 2FT UP 2FT W	BL 2464
LANCASTR (1968)	2367.899	PM N RIM 1 1/2IN IP WITH CONC PLUG + BRAD FLUSH ON SW COR 70TH ST W + FUT AVE F-8 50FT S + 50FT W C/L INT	BL 2465

QUAD-YEAR	ELEV	DESCRIPTION (INCLUDE QUAD AND YEAR IN DESCRIPTION)	BM NUMBER
LANCASTR (1968)	2368.704	PM S RIM 1 1/2IN IP WITH CONC PLUG + BRAD FLUSH DN NE COR 70TH ST W + FUT AVE F-8 50FT N + 50FT E C/L INT	BL 2466
LANCASTR (1968)	2372.343	CSBM MON 4IN UP ON SW COR 70TH ST W + AVE F 66FT S + 34FT W C/L INT MKD (BM 119-10 1961) 2IN IP 3FT UP 2FT E	BL 2467
LANCASTR (1968)	2379.962	PM NE RIM 1 1/2IN IP WITH CONC PLUG + BRAD 3IN UP DN NE COR AVE F + FUT 75TH ST W 50FT N + 50FT E C/L INT	BL 2468
LANCASTR (1968)	2387.623	CS MON IN WELL 12IN DN @ C/L INT AVE F + 80TH ST W MKD (SEC COR 28 29 32 33 R13W T8N)	BL 2470
LANCASTR (1968)	2388.859	PM W RIM 1 1/2IN IP WITH CONC PLUG + BRAD 2IN UP DN NW COR AVE F + 80TH ST W 50FT N + 50FT W C/L INT	BL 2471
LANCASTR (1968)	2389.072	CS MON IN WELL 8IN DN @ C/L INT 80TH ST W + AVE E-8 MKD (1/4 COR 29 28 R13W T8N)	BL 2472
LANCASTR (1968)	2387.722	PM S RIM 1 1/2IN IP CONC PLUG + BRAD FLUSH ON NE COR 80TH ST W + AVE E-8 50FT N + 50FT E C/L INT	BL 2473
LANCASTR (1968)	2404.343	CS MON IN WELL 8IN DN @ C/L INT AVE E + 80TH ST W MKD (SEC COR 20 21 28 29 R13W T8N)	BL 2474
LANCASTR (1968)	2416.955	CS MON IN WELL 10IN DN @ C/L INT AVE D-8 + 80TH ST W MKD (1/4 COR 20 21 R13W T8N)	BL 2475
LANCASTR (1968)	2373.080	RDBM TAG S CB 4FT E DRWY @ SE COR AVE J + CEDAR AVE 90FT E + 42FT S C/L INT	BL 2711
LANCASTR (1968)	2367.608	L+T N CB 6FT E BCR @ NE COR AVE J + FIG AVE 40FT N + 40FT E C/L INT	BL 2712
LANCASTR (1968)	2365.758	RDBM TAG W CB HARDWOOD AVE @ SW COR HARDWOOD AVE + AVE J IN FRONT OF FIRE HYD 76FT S + 20FT W C/L INT	BL 2713
BASELINE (1965)	2491.510	2IN IP (SE EDGE) CONC PLUG + CE TAG 2IN DN @ NW COR 70TH ST E + PROP AVE M 50FT N + 50FT W C/L INT	BL 2760
BASELINE (1965)	2520.986	CS MON IN WELL 10IN DN @ C/L INT AVE M + 20TH ST W MKD (SEC COR 32 33 4 5 T6N T7N R12W)	BL 3196
BASELINE (1965)	2531.420	CSBM MON N CB AVE M 40FT N C/L + 173FT E C/L FUT 5TH ST W MKD (BM 104-1A 1967)	BL 3197
BASELINE (1965)	2471.981	CS MON IN WELL 8IN DN @ C/L INT AVE M + 40TH ST E MKD (SEC COR 32 33 5 4 T7N T6N R11W)	BL 3198
BASELINE (1965)	2486.109	CS MON IN WELL 8IN DN @ C/L INT FUT AVE M + 60TH ST E MKD (SEC COR 34 35 3 2 T7N T6N R11W)	BL 3199
BASELINE (1965)	2491.956	CS MON (N EDGE) IN WELL 8IN DN @ C/L INT 70TH ST E + FUT AVE M MKD (SEC COR 35 36 2 1 T6N T7N R11W)	BL 3200
LANCASTR (1968)	2420.306	CS MON 14IN DN @ C/L INT AVE A + 85TH ST W MKD (1/4 COR 5 32 T8N T9N R13W)	BL 3201
LANCASTR (1968)	2421.987	L+T @ SE COR DRWY TO HSE ON NE COR AVE A + 85TH ST W 55FT N + 180FT E C/L INT MKD (BM)	BL 3202
LANCASTR (1968)	2412.648	CS MON (E EDGE) IN WELL 17IN DN @ C/L INT AVE A + 80TH ST W MKD (SEC COR 4 5 32 33 T8N T9N R13W)	BL 3203

QUAD-YEAR	ELEV	D E S C R I P T I O N (INCLUDE QUAD AND YEAR IN DESCRIPTION)	BM NUMBER
LANCASTR (1968)	2413.876	CSBM MON 6IN UP ON SE COR AVE A + 80TH ST W 26FT S + 110FT E C/L INT MKD (BM 117-14 1961)	BL 3204
LANCASTR (1968)	2403.915	CS MON IN WELL @ C/L INT AVE A + 75TH ST W MKD (1/4 COR 33 4 T8N T9N R13W)	BL 3205
LANCASTR (1968)	2406.657	CSBM MON ON SW COR AVE A + 75TH ST W 100FT S + 26FT W C/L INT MKD (BM 117-13 1961)	BL 3206
LANCASTR (1968)	2395.926	CS MON (E EDGE) IN WELL @ C/L INT AVE A + 70TH ST W MKD (SEC COR 3 4 33 34 T8N T9N R13W)	BL 3207
LANCASTR (1968)	2399.407	CSBM MON 8IN UP ON SW COR AVE A + 70TH ST W 115FT S + 30FT W C/L INT MKD (BM 117-12 1961)	BL 3208
LANCASTR (1968)	2388.793	CSBM MON 4IN UP ON SW COR AVE A + 65TH ST W 30FT S + 94FT W C/L INT MKD (BM 117-11 1961)	BL 3209
LANCASTR (1968)	2387.189	CS MON IN WELL @ C/L INT AVE A + 65TH ST W MKD (1/4 COR 3 34 T8N T9N R13W)	BL 3210
LANCASTR (1968)	2319.990	CSBM MON 6IN UP 33FT S C/L AVE A + 275FT E PROP 25TH ST W MKD (BM 117-28 1967)	BL 3211
LANCASTR (1968)	2331.624	BOLT IN WELL 16IN DN @ C/L INT AVE F + PROP 45TH ST W	BL 3212
LANCASTR (1968)	2389.843	CS MON (N EDGE) IN WELL 8IN DN @ C/L INT 30TH ST E + LANCASTER BLVD MKD (1/4 COR 18 17 T7N R11W)	BL 3213
LANCASTR (1968)	2390.570	RDBM MON IN WELL 90FT S + 35FT E C/L INT 30TH ST E + LANCASTER BLVD	BL 3214
LANCASTR (1968)	2400.190	L+T IN CONC RET WALL @ NW COR AVE J + 30TH ST E 30FT N + 31FT W C/L INT	BL 3215
LANCASTR (1968)	2401.534	RDBM MON IN WELL 70FT S + 33FT E C/L INT AVE J + 30TH ST E	BL 3216
LANCASTR (1968)	2408.689	CS MON (N EDGE) IN WELL 14IN DN @ C/L INT 30TH ST E + AVE J-8 MKD (1/4 COR 19 20 T7N R11W)	BL 3217
LANCASTR (1968)	2410.539	2IN IP (E EDGE) + CS TAG 3IN UP @ SW COR 30TH ST E + AVE J-8 50FT S + 50FT W C/L INT	BL 3218
LANCASTR (1968)	2434.771	L+BN IN TOP STANDPIPE 33FT W C/L 30TH ST E + 205FT N AVE K-8 MKD (BM)	BL 3219
LANCASTR (1968)	2434.160	CS MON (S EDGE) IN WELL 8IN DN @ C/L INT AVE K + FUT 15TH ST E MKD (1/4 COR 24 25 T7N R12W)	BL 3220
LANCASTR (1968)	2437.423	CSBM MON 2IN UP 97FT E + 32FT S C/L INT 15TH ST E + AVE K MKD (BM 105-11 1958)	BL 3221
LANCASTR (1968)	2428.586	2IN IP (N EDGE) + CE TAG 2IN UP @ SW COR AVE K + 20TH ST E 50FT S + 50FT W C/L INT	BL 3222
LANCASTR (1968)	2427.373	CS MON (S EDGE) IN WELL 15IN DN @ C/L INT AVE K + 20TH ST E MKD (SEC COR 19 24 25 30 T7N R12W R11W)	BL 3223
LANCASTR (1968)	2419.438	2IN IP (W EDGE) + CE TAG 3IN UP 50FT N + 50FT W C/L INT 25TH ST E + AVE K	BL 3224
LANCASTR (1968)	2418.663	CS MON (E EDGE) IN WELL 7IN DN @ C/L INT AVE K + 25TH ST E MKD (1/4 COR 19 30 T7N R11W)	BL 3225

QUAD-YEAR	ELEV	DESCRIPTION (INCLUDE QUAD AND YEAR IN DESCRIPTION)	BM NUMBER
LANCASTR (1968)	2422.553	RDBM MON IN WELL 25FT N C/L AVE K + 315FT E FUT 35TH ST E 5FT W PP 1434069E	BL 3226
LANCASTR (1968)	2429.212	L+BN IN CONC FOOTING OF FENCE @ SE COR AVE K + 40TH ST E 60FT S + 61FT E C/L INT MKD (BM)	BL 3227
LANCASTR (1968)	2432.579	RDBM MON IN WELL 24FT N C/L AVE K + 303FT E FUT 45TH ST E 5FT W PP 536333E	BL 3228
LANCASTR (1968)	2437.680	RDBM MON IN WELL 51FT W + 24FT N C/L INT AVE K + 55TH ST E 5FT W PP 938251E	BL 3229
LANCASTR (1968)	2442.999	RDBM TAG SW COR CONC SLAB 25FT W + 125FT N C/L INT AVE K + 60TH ST E	BL 3230
LANCASTR (1968)	2443.491	RDBM MON IN WELL 24FT N + 40FT W C/L INT AVE K + FUT 65TH ST E 4FT S 36IN STANDPIPE	BL 3231
LANCASTR (1968)	2442.231	CS MON (W EDGE) IN WELL 8IN DN @ C/L INT AVE K + 70TH ST E MKD (SEC COR 23 24 25 26 T7N R11W)	BL 3232
LANCASTR (1968)	2448.917	CS MON (N EDGE) IN WELL 12IN DN @ C/L INT AVE K + FUT 75TH ST E MKD (1/4 COR 24 25 T7N R11W)	BL 3233
LANCASTR (1968)	2448.880	RDBM MON IN WELL 25FT N + 138FT E C/L INT AVE K + FUT 75TH ST E 5FT W PP K10483Y	BL 3234
LANCASTR (1968)	2454.525	CS MON (S EDGE) IN WELL 16IN DN @ C/L INT AVE K + 80TH ST E MKD (24 25 19 30 T7N R11W R10W)	BL 3235
LANCASTR (1968)	2456.775	RDBM MON IN WELL 27FT N C/L AVE K + 174FT E 80TH ST E	BL 3236
LANCASTR (1968)	2470.471	L+T E SIDE CONC BASE VENT PIPE 33FT N C/L AVE K + 0.5MI E 80TH ST E OPP ENT TO RANCH 11FT E PP 1309682E	BL 3237
LANCASTR (1968)	2471.447	RDBM MON IN WELL 25FT N C/L AVE K + 0.5MI E 80TH ST E 5FT W PP K10463Y	BL 3238
LANCASTR (1968)	2350.090	L+BN CONC CB OF PARKING LOT ON SE COR AVE I + 60TH ST W 48FT S + 66FT E C/L INT MKD (BM)	BL 3239
LANCASTR (1968)	2351.980	CS MON IN WELL 16IN DN @ C/L INT 60TH ST W + PROP AVE H-8 MKD (1/4 COR 10 11 T7N R13W)	BL 3240
LANCASTR (1968)	2309.630	CSBM MON 2IN UP 40FT S C/L AVE E + 210FT W C/L 20TH ST E 10FT S PP 1270615E MKD (BM 106-136A 1966)	BL 3241
LANCASTR (1968)	2317.656	2IN IP + CE TAG 3IN UP 50FT E + 50FT S C/L INT AVE E + PROP 45TH ST E	BL 3242
LANCASTR (1968)	2336.577	CS MON (N EDGE) IN WELL 18IN DN @ C/L INT 60TH ST E + AVE F MKD (SEC COR 27 26 34 35 T8N R11W)	BL 3243
LANCASTR (1968)	2449.663	PM E EDGE 2IN IP 2IN UP ON SE COR AVE D + 95TH ST W 37FT S + 4FT E C/L INT	BL 3244
LANCASTR (1968)	2324.718	CHIS X SE COR BOLT OF GAS RISER ON NE COR AVE D + 30TH ST W 40FT N + 60FT E C/L INT	BL 3245
LANCASTR (1968)	2366.833	CSBM MON FLUSH 65FT N + 34FT E C/L INT AVE I + PROP 15TH ST E MKD (BM 105-17 1958)	BL 3246
LANCASTR (1968)	2376.206	RDBM TAG N CB AVE I 3FT E OF END 40FT N + 5FT E C/L INT AVE I + PROP 25TH ST E	BL 3247

QUAD-YEAR	ELEV	DESCRIPTION (INCLUDE QUAD AND YEAR IN DESCRIPTION)	BM NUMBER
LANCASTR (1968)	2380.670	CS MON (E EDGE) IN WELL 21IN DN @ C/L INT AVE I + 35TH ST E MKD (1/4 COR 8 17 T7N R11W)	BL 3248
LANCASTR (1968)	2382.692	CS MON (W EDGE) IN WELL 10IN DN @ C/L INT AVE I + 40TH ST E MKD (8 9 17 16 T7N R11W)	BL 3249
LANCASTR (1968)	2388.066	CS MON (E EDGE) IN WELL @ C/L INT AVE I + 50TH ST E MKD (9 10 16 15 T7N R11W)	BL 3250
LANCASTR (1968)	2392.185	CS MON (W EDGE) IN WELL 16IN DN @ C/L INT AVE I + 55TH ST E MKD (1/4 COR 10 15 T7N R11W)	BL 3251
LANCASTR (1968)	2399.717	CS MON (E EDGE) IN WELL 6IN DN @ C/L INT AVE I + 70TH ST E MKD (SEC COR 11 12 14 13 T7N R11W)	BL 3252
LANCASTR (1968)	2370.718	CS MON (E EDGE) @ C/L INT AVE F + 70TH ST W MKD (SEC COR 28 27 33 34 T8N R13W)	BL 3253
LANCASTR (1968)	2379.641	CS MON (S EDGE) IN WELL 6IN DN @ C/L INT 75TH ST W + AVE F MKD (1/4 COR 28 33 T8N R13W)	BL 3254
LANCASTR (1968)	2418.415	USGS MON 3IN UP ON C/L AVE E-14 40FT W C/L 90TH ST W MKD (R 42 1929 RESET 1958)	BL 3255
LANCASTR (1968)	2410.879	2IN IP (E EDGE) + CE TAG 4IN UP DN SE COR 70TH ST E + FUT AVE I-8 45FT E + 52FT S C/L INT	BL 3256
LANCASTR (1968)	2418.855	CS MON (E EDGE) IN WELL 10IN DN @ C/L INT 70TH ST E + AVE J MKD (SEC COR 14 13 23 24 T7N R11W)	BL 3257
LANCASTR (1968)	2433.753	2IN IP (N EDGE) + CE TAG 3IN UP ON SE COR 70TH ST E + FUT AVE J-8 48FT S + 45FT E C/L INT	BL 3258
LANCASTR (1968)	2460.305	2IN IP (N EDGE) 3IN UP @ NW COR 70TH ST E + FUT AVE K-8 50FT N + 50FT W C/L INT	BL 3259
LANCASTR (1968)	2458.597	CS MON (N EDGE) IN WELL 18IN DN @ C/L INT 70TH ST E + FUT AVE K-8 MKD (26 25 T7N R11W)	BL 3260
LANCASTR (1968)	2472.244	CSBM MON 4IN UP ON NE COR 70TH ST E + FUT AVE L 75FT N + 25FT E C/L INT MKD (BM 121-15 1961)	BL 3261
LANCASTR (1968)	2468.789	CS MON (N EDGE) IN WELL 26IN DN @ C/L INT 70TH ST E + FUT AVE L MKD (SEC COR 26 25 35 36 T7N R11W)	BL 3262
LANCASTR (1968)	2481.218	CS MON (E EDGE) IN WELL 8IN DN @ C/L INT 70TH ST E + FUT AVE L-8 MKD (1/4 COR 35 36 T7N R11W)	BL 3263
LANCASTR (1968)	2485.106	2IN IP (N EDGE) + CE TAG FLUSH @ SE COR 70TH ST E + FUT AVE L-8 40FT S + 40FT E C/L INT	BL 3264
LANCASTR (1968)	2358.692	2IN IP + CE TAG 6IN UP ON NW COR AVE I + FUT 65TH ST W 60FT W + 30FT N C/L INT	BL 3265
LANCASTR (1968)	2317.094	RDBM MON IN WELL 8IN DN ON SW COR 30TH ST W + PROP AVE G-8 63FT W + 57FT S C/L INT 2IN IP 3FT UP 2FT W	BL 3266
LANCASTR (1968)	2317.338	RDBM MON IN WELL 8IN DN ON NW COR 30TH ST W + PROP AVE G-8 63FT W + 57FT N C/L INT 2IN IP 3FT UP 2FT W	BL 3267
LANCASTR (1968)	2353.584	RDBM MON DN SW COR 60TH ST E + AVE G 34FT W + 25FT S C/L INT	BL 3268
LANCASTR (1968)	2372.652	RDBM MON ON SW COR 60TH ST E + AVE H 30FT W + 24FT S C/L INT 3FT W PP 538352E	BL 3269

QUAD-YEAR	ELEV	DESCRIPTION (INCLUDE QUAD AND YEAR IN DESCRIPTION)	BM NUMBER
LANCASTR (1968)	2400.488	CSBM MON 2IN UP ON NW COR 50TH ST E + LANCASTER BLVD 157FT N + 48FT W C/L INT MKD (BM 120-9A 1966)	BL 3270
LANCASTR (1968)	2399.218	CS MON (W EDGE) IN WELL 22IN DN @ C/L INT 50TH ST E + LANCASTER BLVD MKD (1/4 COR 16 15 T7N R11W)	BL 3271
LANCASTR (1968)	2416.398	CS MON (E EDGE) IN WELL 21IN DN @ C/L INT 50TH ST E + AVE J MKD (SEC COR 16 15 21 22 T7N R11W)	BL 3272
LANCASTR (1968)	2419.210	CSBM MON 4IN UP ON SE COR 50TH ST E + AVE J 127FT S + 48FT E C/L INT MKD (BM 120-8 1961)	BL 3273
LANCASTR (1968)	2426.735	2IN IP + SPK IN WELL 8IN DN @ C/L INT 50TH ST E + FUT AVE J-8	BL 3274
LANCASTR (1968)	2427.908	CSBM MON FLUSH ON SW COR 50TH ST E + FUT AVE J-8 114FT S + 40FT W C/L INT MKD (BM 120-7 1961)	BL 3275
LANCASTR (1968)	2444.911	CS MON (W EDGE) IN WELL 24IN DN @ C/L INT 50TH ST E + FUT AVE K-8 MKD (1/4 COR 28 27 T7N R11W)	BL 3276
LANCASTR (1968)	2448.256	CSBM MON 4IN UP ON SE COR 50TH ST E + FUT AVE K-8 79FT S + 36FT E C/L INT MKD (BM 120-5 1961)	BL 3277
LANCASTR (1968)	2454.922	RDBM MON ON NW COR 50TH ST E + AVE L 81FT N + 40FT W C/L INT 6FT S PP 800540E	BL 3278
LANCASTR (1968)	2455.460	CS MON (W EDGE) IN WELL 15IN DN @ C/L INT 50TH ST E + AVE L MKD (SEC COR 28 27 33 34 T7N R11W)	BL 3279
LANCASTR (1968)	2465.438	CS MON (N EDGE) IN WELL 28IN DN @ C/L INT 50TH ST E + FUT AVE L-8 MKD (1/4 COR 33 34 T7N R11W)	BL 3280
LANCASTR (1968)	2467.788	CSBM MON 8IN UP ON SE COR 50TH ST E + FUT AVE L-8 40FT S + 32FT E C/L INT MKD (BM 120-3 1961)	BL 3281
LANCASTR (1968)	2520.137	CS MON IN WELL 12IN DN @ C/L INT AVE K + 95TH ST W MKD (1/4 COR 19 30 T7N R13W)	BL 3282
LANCASTR (1968)	2350.705	RDBM MON IN WELL ON SW COR AVE G + FUT 55TH ST E 45FT W + 23FT S C/L INT 6FT W PP 1786549E	BL 3283
LANCASTR (1968)	2346.932	CS MON (E EDGE) IN WELL 22IN DN @ C/L INT AVE G + FUT 45TH ST E MKD (1/4 COR 33 4 T7N T8N R11W)	BL 3284
LANCASTR (1968)	2348.715	2IN IP + CE TAG 6IN UP ON SW COR AVE G + FUT 45TH ST E 50FT W + 50FT S C/L INT	BL 3285
LANCASTR (1968)	2346.354	RDBM MON ON NW COR AVE G + FUT 40TH ST E 30FT W + 55FT N C/L INT	BL 3286
LANCASTR (1968)	2346.447	CS MON (W EDGE) IN WELL 8IN DN @ C/L INT AVE G + FUT 35TH ST E MKD (1/4 COR 32 5 T7N T8N R11W)	BL 3287
LANCASTR (1968)	2346.389	CHIS X ON S EDGE 2IN IP WITH CE TAG 6IN UP ON SW COR AVE G + FUT 35TH ST E 50FT S + 50FT W C/L INT	BL 3288
LANCASTR (1968)	2340.065	CS MON (N EDGE) 14IN DN @ C/L INT FUT AVE G + FUT 25TH ST E MKD (1/4 COR 31 6 T7N T8N R11W)	BL 3289
LANCASTR (1968)	2341.794	CHIS X ON E EDGE 2IN IP WITH CE TAG 4IN UP ON SW COR FUT AVE G + FUT 25TH ST E 50FT S + 50FT W C/L INT	BL 3290
LANCASTR (1968)	2335.397	CS MON (N EDGE) 16IN DN @ C/L INT FUT AVE G + 20TH ST E MKD (SEC COR 36 31 1 6 T7N T8N R11W R12W)	BL 3291

QUAD-YEAR	ELEV	DESCRIPTION (INCLUDE QUAD AND YEAR IN DESCRIPTION)	BM NUMBER
LANCASTR (1968)	2338.223	2IN IP + CE TAG 6IN UP ON SW COR 20TH ST E + FUT AVE G 50FT S + 50FT W C/L INT	BL 3292
LANCASTR (1968)	2333.718	CHIS X ON S EDGE 2IN IP WITH CE TAG 8IN UP ON SE COR AVE G + FUT 15TH ST E 50FT S + 50FT E C/L INT	BL 3293
LANCASTR (1968)	2332.489	CS MON (E EDGE) 6IN DN @ C/L INT AVE G + FUT 15TH ST E MKD (1/4 COR 36 1 T7N T8N R12W)	BL 3294
LANCASTR (1968)	2328.613	CS MON (W EDGE) 16IN DN @ C/L INT AVE G + FUT 10TH ST E MKD (SEC COR 35 36 2 1 T7N T8N R12W)	BL 3295
LANCASTR (1968)	2330.875	2IN IP + CE TAG 6IN UP ON SW COR AVE G + FUT 10TH ST E 50FT S + 50FT W C/L INT	BL 3296
LANCASTR (1968)	2329.058	PM ON NE EDGE 2IN IP 3IN UP ON NE COR AVE G + FUT 5TH ST E 50FT N + 50FT E C/L INT	BL 3297
LANCASTR (1968)	2324.716	CS MON (SW EDGE) 6IN DN @ C/L INT AVE G + FUT 5TH ST E MKD (1/4 COR 35 2 T7N T8N R12W)	BL 3298
LANCASTR (1968)	2380.764	L+BN CONC COLLAR OF FIRE HYD @ SW COR AVE K + 45TH ST W 36FT S + 60FT W C/L INT MKD (RD)	BL 3299
LANCASTR (1968)	2387.534	L+T 1FT W BCR @ NW COR AVE K + 30TH ST W 40FT N + 67FT W C/L INT	BL 3300
LANCASTR (1968)	2387.354	CS MON IN WELL 6IN DN @ C/L INT AVE K + 20TH ST W MKD (SEC COR 20 21 28 29 T7N R12W)	BL 3301
LANCASTR (1968)	2326.986	CS MON (S EDGE) IN WELL 10IN DN @ C/L INT 50TH ST E + FUT AVE E-8 MKD (27 28 T8N R11W)	BL 3302
LANCASTR (1968)	2333.592	CS MON (W EDGE) IN WELL 10IN DN @ C/L INT 50TH ST E + AVE F MKD (SEC COR 33 34 27 28 T8N R11W)	BL 3303
LANCASTR (1968)	2361.504	RDBM TAG S CB 38FT E BCR @ SE COR AVE J + 10TH ST W 113FT E + 42FT S C/L INT	BL 3304
LANCASTR (1968)	2359.239	CS MON IN WELL @ C/L INT 20TH ST W + AVE J-8 MKD (1/4 COR 20 21 T7N R12W)	BL 3305
LANCASTR (1968)	2359.805	CSBM MON 4IN UP ON SW COR 20TH ST W + AVE J-8 50FT S + 35FT W C/L INT MKD (BM 105-38 1967)	BL 3306
LANCASTR (1968)	2332.200	RDBM TAG IN CB @ END CULDESAC ON SW COR 20TH ST W + LANCASTER BLVD 63FT S + 68FT W C/L INT	BL 3307
LANCASTR (1968)	2332.379	CS MON (E EDGE) IN WELL 6IN DN @ C/L INT 20TH ST W + LANCASTER BLVD MKD (1/4 COR 16 17 T7N R12W)	BL 3308
LANCASTR (1968)	2326.926	CS MON (W EDGE) IN WELL 8IN DN @ C/L INT AVE I + FUT 40TH ST W MKD (SEC COR 12 7 13 18 T7N R12W R13W)	BL 3309
LANCASTR (1968)	2330.159	CHIS X ON N EDGE OF 2IN IP WITH CE TAG 4IN UP ON SW COR FUT 40TH ST W + FUT AVE I-8 45FT W + 50FT S C/L INT	BL 3310
LANCASTR (1968)	2317.243	1-1/2IN IP 8IN DN ON SE COR 30TH ST W + FUT AVE E-8 50FT S + 60FT E C/L INT	BL 3311
LANCASTR (1968)	2317.114	L+BN CONC APRON OF GARAGE 160FT E C/L 30TH ST W + 250FT N C/L FUT AVE E-8 MKD (BM)	BL 3312
LANCASTR (1968)	2316.143	RDBM MON IN WELL 8IN DN ON SE COR 30TH ST W + AVE E 78FT S + 78FT E C/L INT 2IN IP 3FT UP 2FT E	BL 3313

QUAD-YEAR	ELEV	DESCRIPTION (INCLUDE QUAD AND YEAR IN DESCRIPTION)	BM NUMBER
LANCASTR (1968)	2315.585	1-1/2IN IP 8IN DN ON SW COR 30TH ST W + FUT AVE D-8 50FT S + 60FT W C/L INT	BL 3314
LANCASTR (1968)	2315.445	1-1/2IN IP 8IN DN ON NE COR 30TH ST W + FUT AVE D-8 50FT N + 60FT E C/L INT	BL 3315
LANCASTR (1968)	2327.434	1-1/2IN IP 6IN UP 50FT E C/L 30TH ST W ON C/L FUT AVE C-8	BL 3316
LANCASTR (1968)	2328.750	1-1/2IN IP 6IN UP ON SE COR AVE C + 30TH ST W 50FT S + 50FT E C/L INT	BL 3317
LANCASTR (1968)	2327.352	1-1/2IN IP 8IN DN ON SW COR AVE C + 30TH ST W 50FT S + 50FT W C/L INT	BL 3318
LANCASTR (1968)	2328.071	1-1/2IN IP + CUT SPK IN CONC COLLAR 2IN UP ON SE COR 30TH ST W + FUT AVE B-8 40FT S + 50FT E C/L INT	BL 3319
LANCASTR (1968)	2331.549	2IN IP 1IN UP ON NW COR AVE B + 30TH ST W 50FT N + 50FT W C/L INT	BL 3320
LANCASTR (1968)	2328.821	2IN IP 4IN UP ON SE COR AVE A-8 + 30TH ST W 40FT S + 50FT E C/L INT	BL 3321
LANCASTR (1968)	2328.534	2IN IP 4IN UP ON SW COR AVE A-8 + 30TH ST W 40FT S + 50FT W C/L INT	BL 3322
LANCASTR (1968)	2644.917	RDBM MON IN WELL ON NE COR AVE K + FUT 105TH ST W 47FT N + 50FT E C/L INT	BL 3323
LANCASTR (1968)	2644.150	CS MON (E EDGE) IN WELL 10IN DN @ C/L INT AVE K + FUT 105TH ST W MKD (1/4 COR 24 25 T7N R14W)	BL 3324
LANCASTR (1968)	2378.019	RDBM MON IN WELL 149FT W + 31FT S C/L INT AVE K + FUT 65TH ST W	BL 3325
LANCASTR (1968)	2376.971	CS MON (N EDGE) IN WELL 8IN DN @ C/L INT AVE K + FUT 65TH ST W MKD (1/4 COR 22 27 T7N R13W)	BL 3326
LANCASTR (1968)	2386.975	CS MON (S EDGE) IN WELL 8IN DN @ C/L INT AVE K + 60TH ST W MKD (SEC COR 22 23 26 27 T7N R13W)	BL 3327
LANCASTR (1968)	2388.290	RDBM TAG NE COR CONC BASE OF FIRE HYD @ SE COR AVE K + 60TH ST W 75FT S + 50FT E C/L INT	BL 3328
LANCASTR (1968)	2387.196	X ON S EDGE OF 2IN IP WITH CE TAG 2IN UP ON NW COR AVE K + FUT 55TH ST W 50FT N + 50FT W C/L INT	BL 3329
LANCASTR (1968)	2385.156	CS MON (N EDGE) IN WELL 17IN DN @ C/L INT AVE K + FUT 55TH ST W MKD (1/4 COR 23 26 T7N R13W)	BL 3330
LANCASTR (1968)	2538.981	CS MON 8IN DN @ C/L INT 90TH ST W + AVE K-8 MKD (1/4 COR 29 30 T7N R13W)	BL 3331
LANCASTR (1968)	2544.981	L+BN CONC + ROCK HDWL ON SE COR 90TH ST W + AVE K-8 115FT S + 17FT E C/L INT MKD (BM)	BL 3332
LANCASTR (1968)	2640.535	USC+GS MON FLUSH ON NE COR 90TH ST W + AVE L 60FT N + 25FT E C/L INT MKD (Y 1044 1960)	BL 3333
LANCASTR (1968)	2641.166	CS MON 2IN DN @ C/L INT 90TH ST W + AVE L MKD (SEC COR 29 30 31 32 T7N R13W)	BL 3334
LANCASTR (1968)	2348.385	R D MON IN WELL 8IN DN @ C/L INT LANCASTER BLVD + ELM AVE	BL 3335

QUAD-YEAR	ELEV	DESCRIPTION (INCLUDE QUAD AND YEAR IN DESCRIPTION)	BM NUMBER
LANCASTR (1968)	2348.902	RDBM TAG N CB 5FT E BCR @ NE COR LANCASTER BLVD + ELM AVE 40FT N + 47FT E C/L INT	BL 3336
LANCASTR (1968)	2352.512	R D MON IN WELL 8IN DN @ C/L INT SIERRA HWY + LANCASTER BLVD	BL 3337